

Historic, Archive Document

Do not assume content reflects current scientific knowledge, policies, or practices.

62.71

LIBRARY
RECEIVED
☆ JUN 26 1947 ☆
U. S. Department of Agriculture



SUNSET LILY

Autumn Planting
1947

Romaine B. Ware - Lilies

C A N B Y , O R E G O N

Cherish the faith that

... "In paradise a garden lies."

The Thrill of New

There is no garden thrill quite so entrancing as looking forward to the flowering of new lilies in your garden. Somehow they have a degree of charm far exceeding most other flowers. Even the bulbs are exciting as you receive them fresh dug and full of vigor and vitality.

However, it's the anticipation of the beauty to come that engenders the greatest thrills. You have read the carefully prepared description of their perfection, you've pictured them in your borders and now you plant them ever so carefully and wait the coming of spring that will awaken them into growth and bring you the joy of their blooming.

This is especially true with new varieties; kinds that have not been grown before in your garden; maybe not in any garden in your community. Because lilies are not common. Only a few of the better gardens grow any but the ordinary varieties. Not that the older kinds are any less beautiful, they are exquisite, but so many of us get added thrills from growing the uncommon things.

New things are always exciting and this is especially true with new lilies. Some of the things offered on these pages have never been seen by more than a dozen or a few score of people. And still you can have them in your garden with no more effort than the growing of a few Petunias or Zinnias. Meeting interesting strangers is always a thrill and these new lilies are thrilling strangers indeed.

Lilies are among the "point with pride" kind of flowers. Probably no other garden achievement gives one the degree of satisfaction attained from producing a well grown clump of fine lilies. Your friends, your neighbors, even casual passersby will thrill to the perfection of fine lilies. If you want your garden to become favorably known, plant some of these fine lilies and the clan of garden folk will make a path to your gate.

FIESTA HYBRIDS-245—Here's an enchanting group of fine lilies, bred and selected by the late Dr. Abels. The good doctor was a keen connoisseur of fine lilies and devoted many years to producing these lovely hybrids. They are of the Martagon type, on thin, graceful, wiry stems, 3 to 6 feet tall. Their numerous flowers come in brilliant shades of red and mahogany. These gorgeous hybrids are now being grown here in Oregon and by careful selection and reselection they are even vastly improved over the former strain. You will find them not only beautiful but vigorous and healthy; among the most satisfactory of the newer lilies for the average garden. July. Sun or partial shade. PD 6 in. **Each \$2.50.**

GOLDEN CHALICE HYBRIDS-870—This group of upright, vase-shaped new lilies was developed here in Oregon. They are vigorous and healthy, free flowering and fast propagators. Golden Chalice Hybrids are a reselection from thousands of seedlings and come in a mixture of clear pure colors of red mahogany and yellow. Their culture is easy and unquestionably they will be very popular when better known. Heights vary from 3 to 5 feet with great clusters of the upright blooms to each stem. Flowering season, June and July. Planting depth 4 inches. The supply of these new hybrids is not plentiful as yet. They enjoy full sun or partial shade. You will enjoy them. **Each \$1.40, Three for \$3.75.**

Romaine B. Ware Lilies

Business established 1927 by Miss Julia E. Clark

This Lily business was established just two decades ago by Miss Clark, one of Oregon's pioneer growers of quality Lilies from seed. In 1942 she arranged to combine with her business the retail sales end of the Lily business of Mr. Edgar L. Kline, Grower and Importer, Lake Grove, Oregon; he to grow the bulbs and she to handle retail distribution.

Upon my purchase of the business from Miss Clark in '45, I considered myself most fortunate in being able to continue the arrangement with Mr. Kline. He is now greatly increasing his propagation schedule and we hope in a few years to more nearly be able to meet the increasing demand for fine Lilies. Both Mr. Kline and I sincerely appreciate the continued patronage of all the old customers. We pledge our best efforts to supply the same good quality bulbs you have received in the years past.

Lilies in Your Garden

CENTIFOLIUM Hybrids, Pink-211—Would you like a big pink trumpet lily as hardy and vigorous as the famous Regal? Maybe you have seen Regals that were somewhat pink on the exteriors but this Centifolium is pink on the face of the petals, a real pink-toned lily, something we have dreamed of but seldom seen. Last year we did not have nearly enough of these in spite of the high price that had to be asked. Now we have a more ample supply of flowering size bulbs (all have bloomed in the nursery). They are strong growing with wide open blooms, all grown from seed and selected. They flower about three weeks later than the Regals due to the Centifolium blood. **Selected flowering bulbs \$7.00.**

REGAL, Light Pink-682—These are a selection from thousands of seedlings. They are pink-toned, not as pink as the Pink Centifolium Hybrids offered above but still distinctly pink. They bloom along with the regular Regals and are of the same rugged disposition. Same culture as the Regale. We have but a limited stock of these this year so order early. **Each, flowering size, \$3.00, Three for \$8.00.**

CENTIFOLIUM hybrids-212—This is the regular strain. Offered on the back cover.

CENTIFOLIUM Hybrids, Selected Forms-213—There is a lot of variation in the tens of thousands of these hybrids as they grow from seed. Some have the clusters of bloom exceptionally well spaced and held so that each flower shows to the best advantage. Others are simply the most perfectly formed flowers. These Selected forms are exactly what the term implies. I personally go through the field and tag the outstandingly perfect blooms when they are in flower and at digging time these are kept separate to fill your orders. There are, of course, but a limited number of these and when they are sold, no more are to be had until the next year. While they last, **each \$1.75, Three for \$4.75.**

CENTIFOLIUM Hybrids, Pure White-214—This is a selection from the above Selected Forms but instead of the regular color effect, they are pure white both inside and out. The very large trumpets are beautifully held and all in all they are a grand group of white trumpets flowering during the early part of July. These are becoming more plentiful and I'm able to offer them at, **each \$2.75, Three for \$7.50.**

Orders for the above two Selected Forms must be in early.

DUCHESS-284—Here's a brand new Lily, hybrid of Amabile, a variety of which we have comparatively few hybrids. It has lovely semi-recurved blooms of medium size. A fine orange-yellow with brown spots. It is a good grower and blooms freely. Try it in your border with blue flowers as the background. There are so many schemes that can be worked out if you study your garden with the thought of color combinations. Late June into July. Ht 2 to 3 ft. PD 5 in. Flowering, each \$8.00.

Speciosum *Oregon Giant*

We offered this for the first time last season. Without doubt it is the finest of all the Speciosums available today. The blooms are larger, the color and form exceptionally fine and all in all it bids fair to be "tops" for some time.

In general effect it is the punctatum type, white with pink spots or blotches. You would call it a pink lily with white margins and simply fall in love with it. The photograph shows its recurved form and the extreme breadth of the petals. Vigorous, 2 to 4 feet, free flowering.

All the stock has been grown in carefully isolated planting to insure disease free bulbs and we have not found any evidences of disease at any time. Last year we had but a few hundred bulbs and they were sold quickly. This year the supply is better but not plentiful so **order early.**

August flowering, planting depth (PD) 5 inches. Selected flowering size bulbs, **each \$1.75, Three for \$4.75.** We have a few large bulbs at, each \$2.25.

Photo by Frank P. McWhorter
Oregon State College

AURELIAN HYBRIDS

We offer for the first time a lot of hybrid lilies by Carleton Yerex, lily hybridist of Oregon. He terms them "Aurelian Hybrids" and while in some respects similar to the older Aurelian Hybrids, they are a distinct step forward. The original crosses were made by Edouard Debras in France more than 20 years ago and from these thousands of seedlings have been produced. They vary in form and color from white lilies shaped like Henryi to trumpet lilies of deep yellow and apricot and all imaginable intermediate shapes and colors. Some are shaped almost like Auratums. Throughout the years they have been selected and re-selected. This year we are offering three groups of these new hybrids which we feel are most worth while. PD 6 inches.

AURELIAN Hybrids, Henryi Form-150—Both the plant and the flowers are large and come in delightful pastel tones. Some have up to 20 blooms on eight-foot stalks. They can only be offered as mixed hybrids though each one is selected for perfection of form and type. They are truly lovely. **Each \$3.00, Three for \$8.00.**

AURELIAN Hybrids, Semi-trumpets-151—Some of the most beautiful and striking forms of these hybrids are in this group. The Henryi blood shows in the shortened trumpets and the recurved petals. They vary from pure white through the pastel shades but all show the influence of the Henryi blood. **Each \$3.00, Three for \$8.00.**

AURELIAN Hybrids, Ivory, Buff and Sulphur Trumpets-152—These are true trumpet lilies showing the Sargentiae blood but the lovely buff, ivory and yellow color comes from the Henryi infusion. Some of the experts who have seen them consider them superior to the Burmese lily *Suiphureum*. They are tall, vigorous and very large. A delightful picture is produced by planting them with the charming blue flowered *Aconitum napellus* Sparks' variety. There are countless lovely combinations that may be worked out in your borders, effects that will give your garden a degree of charm truly expressing your individuality. Only a limited number of these Aurelian Hybrids can be sold this year. **Each \$3.00, Three for \$8.00.**

LONGIFLORUM GARDEN PRIDE-441—Here's a brand new lily somewhat like Estate but with larger blooms and more of them giving a longer blooming season. Two to five feet tall, very sturdy and vigorous, especially good for greenhouse forcing. PD 6 inches. Large bulbs, each \$1.55.



SPECIOSUM OREGON GIANT



AURATUM

This is but a suggestion of the exquisite perfection of these new Auratums. They are almost unbelievably improved over the type—simply beyond description.

Auratum Esperanza

We herewith offer what is unquestionably the greatest development in the Lily world in many decades. After more than 80 years of almost fruitless attempts to establish Auratum Lilies in this country we are suddenly confronted with a new strain of seedlings not only indescribably beautiful but perfectly healthy also. I regret very much that it is impossible to use true-life color illustrations of them this year but circumstances beyond our control prevents. These seedling Lilies, *Esperanza Auratums* (*Esperanza* means hope), are as vastly improved over the older Auratums as the present day motor car is an advance over that of 1905. Truly, they defy description. Only by flowering them in your own garden can their magnificent perfection be appreciated. We are happy to offer these glorious Lilies, happy that we can be instrumental in adding such beauty to American gardens. They are extremely hardy, even at below zero temperatures and down south with slight shade, they succeed beautifully. But avoid deep planting, see cultural directions at the right above. Five inches of soil over the bulb is correct. Late July to mid-September. Delivery mid-November. Quantities are limited so it will be wise to order early.

AURATUM Esperanza Select Strain—135—These vary from normal size up to huge blooms 12 inches across—measured without stretching the tips of the petals. They come in numerous forms, windmill, star, bell-shaped, orchid, frilled and waved. Blended and splashed with color, gorgeously rayed, they simply defy description. The stock of this Select Strain is not yet plentiful. We have a few large size, each \$4.25. Choice medium bulbs, each \$2.75.

AURATUM Platyphyllum—139—Not available this year.

AURATUM Rubro Vittatum—138—A very scarce variety and always popular in spite of the price. The bloom is extremely beautiful, a glistening white with the band deep red except at the base where it is yellow. The crimson spots are larger and more highly colored. Altogether a most outstanding Lily. Auratums are all so very beautiful and now that it is possible to get home grown, disease free bulbs, they can take their rightful place. Of this variety we seldom have enough, so please order early. November shipment. Choice flowering bulbs, each \$9.00.

Healthy, Northwest Grown

Auratum Lilies

Golden-Rayed or Gold Banded Lilies

*"Till now one dreamed not what could be done
With a bit of earth and a ray of sun."*

—Lowell.

Auratum is the most gorgeously beautiful of all Lilies, the "ne plus ultra" of the Lily world. Mere words are painfully inadequate to describe its perfection. Only when seen can the unparalleled beauty of this jewel be truly appreciated.

Since first flowered in this country more than 80 years ago, millions of Lily lovers have planted and coddled this garden aristocrat only to find it a fleeting joy. Imported diseased bulbs have brought disaster until very few survive. However, the last decade has seen healthy disease free bulbs produced from seed here in the Northwest by the thousands. You can plant them with confidence. And besides being healthy and vigorous, the blooms are even more beautiful than the older forms.

The Auratum is a large bowl-shaped Lily, waxy-white, spotted crimson with each segment striped with a gold band. The sturdy three- to eight-foot stems carry up to 30 or more horizontally held blooms when well established and their fragrance is delightful. Blooming season, late July to mid-September. They enjoy full sunshine except in very warm sections; a moist but well drained soil with ample humus, and, this is very important, **DO NOT PLANT DEEP**. In spite of most authorities to the contrary, five inches of soil above the bulb is enough. Deep planting courts disaster. This shallower planting advice is the result of recent exhaustive tests.

Due to the vast improvement of the *Esperanza Auratums* over the older types it has been decided to discontinue offering the old forms. Those offered on this page are the only ones for this year.

AURATUM Pictum—136—A very superior variety, large open blooms, white, heavily spotted crimson, with tips of petals flushed pink to crimson. A delightful and distinct variation. This is one of the early forms of this Lily, famous for many years. We have an excellent stock of healthy bulbs which will not disappoint you. Choice flowering bulbs, each \$5.00.

ANOTHER FLOWER TYPE



Bellingham Hybrids

Here's a magnificent group of hybrid Lilies you'll not want to miss. They are remarkably resistant to most Lily troubles and reliably long lived. The colors are striking and varied. The pyramidal clusters of bloom, 20 to 30 on a stalk, are airy and graceful, almost orchid-like in effect. Grouped against evergreens, their brilliance rewards you richly.

Bellingham Hybrids

BELLINGHAM HYBRIDS, Mixed Seedlings-177-This lot of bulbs is the famous de Graaff strain, rogued most carefully for all inferior types and colors and raised from seed of selected stock plants. The colors range through all shades of yellow, pinkish-copper and orange to red and buff-terra cottas, spotted and blotched with browns, purples, blacks and maroon. They vary from tightly reflexed, Martagon types to open, slightly reflexed Turk's Cap blossoms. Many have the grace of Orchids. All in all they offer one of the most brilliant displays of the Lily world. For mass display, few strains equal them. Ht. 4 to 7 feet. PD 6 inches. Sun or partial shade. Good, flowering size bulbs, 70c each, Three \$1.95. We have a few larger bulbs, each 95c.

BELLINGHAM HYBRID LILIES



LILUM
SHUKSAN

Bellingham Hybrids----Named Varieties

Below we offer four named hybrids of exceptional quality. They were selected by the late Dr. David Griffiths at the Bellingham Experiment station as the best among thousands of seedlings. For sheer brilliance of color and mass effect few other groups of hybrids equal them.

Lilium Shuksan

SHUKSAN-790-An irregularly reflexed, typically Martagon type Lily, cadmium yellow, faintly flushed red at end of petals and dotted blackish maroon. Altogether a striking Lily, vigorous and handsome. Many of the experts consider it the best of Griffiths' hybrids. Enjoys partial shade and an open porous soil. Ht. 4 to 5 feet. PD 6 in. We have a limited number of extra selected bulbs, \$1.05 each. Smaller, good flowering bulbs, 85c each, Three \$2.40.

CYRUS GATES-235-One of the most brilliant and vigorous of the strain. Numerous flowers, true Martagon shape, cadmium orange, base profusely spotted with purple-black. PD 6 inches. Flowering size bulbs, each \$2.75.

DOUGLAS INGRAM-278-A beautifully reflexed Lily, deep cadmium in the throat with a dull red overlay extending outward and blending into large bright red spot. Ht. 4 to 5 feet. Dwarfier than most of this group but vigorous and healthy. PD 6 in. Flowering size bulbs, each \$1.35.

SACAJAWEA-750-This gorgeous Lily was named after the Indian woman who so faithfully guided Lewis and Clark on their memorable expedition to Oregon which had so much to do with winning this vast region for the United States. Its large reflexed flowers are a deep orange-yellow with black spots, the stem enhanced with whorls of lustrous foliage. Ht. 5 to 6 feet. Sun or partial shade. PD 6 in. Like all the Lilies in this group, it enjoys a porous soil with abundant peat or leafmold and good drainage. A healthy, vigorous Lily you'll surely enjoy. A few selected bulbs, \$1.35 each.



Backhouse Hybrids

Half a century ago a Lily enthusiast in England, Mrs. R. O. Backhouse, (pronounced Backous) crossed *L. Martagon* and its varieties with *L. Hansonii*, producing a group of hybrids which are today among our most valued Lilies. Not only are they very beautiful, but due to rugged constitution, they have persisted through the years, their value undiminished. We offer true stock of four of her original named hybrids as well as a choice selection of the strain in unnamed mixture. Don't overlook this long-lived, disease resistant group. Late June to July. Ht 5 to 6 ft. Sun or partial shade. PD 5 in. They will make a grand show in front of purple *Buddleia*, faced down with low growing *Deutzias* as protection from frost to the early starting Lily shoots.

BROCADE-182-One of the loveliest in the group, free flowering and vigorous, orange-yellow with pink marbling and maroon dots. The fragrant, graceful recurving blooms are strikingly effective in the garden. Scarce. Extra Select bulbs, each \$4.50.

MRS. R. O. BACKHOUSE-170-A tall vigorous variety with 15 to 30 flowers to a stem, ivory, flushed gold, delicately spotted with purple. Truly a gem. Scarce. Selected bulbs, each \$4.50.

SCEPTRE-786-An exquisite Lily, pinkish-buff with deep purple spots, tips of petals suffused fuchsia purple. An intriguing beauty. Blooms later than most of this group. Tall and vigorous. Selected bulbs. Flowering size, each \$4.50.

SUTTON COURT-794-Not unlike Mrs. Backhouse but a bit deeper in tone. Light yellow interior, spotted purple, exterior shaded pink. A decidedly distinct and pleasing Lily. Stocks never equal the demand. Select bulbs, each \$7.50.

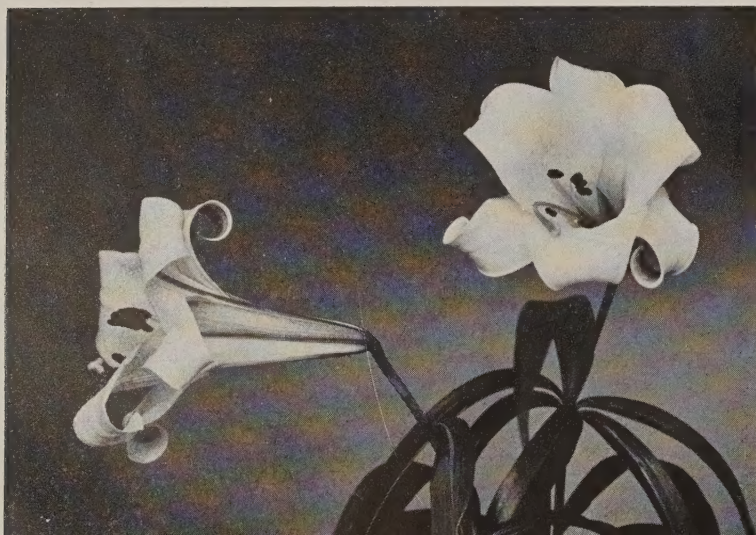
Backhouse Hybrids--Mixed

BACKHOUSE HYBRIDS, Mixed-171-These are unnamed seedlings of the strain and vary from ivory to gold, tinted with purple, pink, brown, orange and apricot. Their iridescent beauty, together with ready adaptability to ordinary garden conditions and freedom from disease, make them truly indispensable. Though we have considerable stock of these this year, it is doubtful if it will meet the demand. Selected bulbs, each \$2.50.

BOLANDERI-185-A dainty little native from southern Oregon bearing from one to six deep crimson blooms with purplish spots. A small bulb, not too easily grown but well worth extra attention. It demands a loose soil with ample leafmold and a shady spot with good drainage. Ht. 1 to 3 ft. PD 5 in. Flowering size bulbs, each \$1.50.

BROWNII-183-True variety, one of the finest trumpet Lilies. Large marble white blooms, stained purple outside, anthers chocolate brown. A fragrant Lily of classic gracefulness with heavy waxy-like petals. The demand is heavy for this beautiful Lily and the supply is always limited. We have only a few bulbs this year so early orders only can be filled. July. Ht. 3 to 4 ft. PD 6 in. Flowering size \$4.00.

BROWNII



AMABILE-125-A June blooming dwarf, ideal in foreground of your border or as a brilliant highlight in rock garden. Turk's Cap shape, grenadine-red, spotted black. Easiest culture, sun or partial shade. Try it against white *Spiraea Von Houtteii*. Ht 1 1/2 to 3 ft. PD 4 in. Good flowering size bulbs, each 65c, Three \$1.80.

AMABILE Luteum-126-A rare form in a lovely yellow. Delightful against *Delphinium Belladonna* with a ground planting of pansies in deep ultramarine blue. Culture as above. Stock scarce. Flowering bulbs, each \$2.10.

AZALEA-160-An extremely vigorous new hybrid (*Philadelphicum-Dauricum*) with brilliant, attractive, apricot colored cup-shaped blossoms. Valuable either massed or as individual specimens. Makes a delightful picture with a ground cover of the Hybrid Alpine Aster "Goliath", against dark green foliage. May-June. Ht. 2 to 2 1/2 ft. PD 4 in. Sunny situation. Selected bulbs, flowering size, \$1.25.

BURBANKII-188-A strain of hybrids produced by the famous Luther Burbank by crossing *L. Paryii* and *L. Pardalinum*. This one is a gorgeous yellow five to eight feet tall, intermediate between the parents in type of flower, bearing up to 20 blooms. It is vigorous and healthy and altogether worth while. Up until now we have not had sufficient stock to offer it. You will find it a good addition to your collection. The golden yellow blooms are shaded crimson with mahogany spots, a semi-recurved bloom, opening in July. Partial shade. PD 4 inches. Each \$1.75.



CANADENSE FLAVUM

CANADENSE Flavum-191-One of the best loved American Lilies, easy to grow, tall, graceful, nodding bell-shaped flowers in a pleasing shade of yellow with chocolate spots. Likes plenty of moisture, humus and full sun. June. Ht 2 to 5 ft. PD 4 in. Flowering bulbs, each 35c, Three for \$1.00.

CANADENSE Rubrum-192-A red form of the above with yellow throat and a few spots. More rare than the type. Delightful. Flowering bulbs, each 50c, Three for \$1.40.

COLUMBIANUM Ingramsii-220-This is an improved form of one of Oregon's native Lilies. In the wild it frequently reaches seven feet in height but seldom as tall in the garden. A robust Lily bearing up to 20 reflexed, *Martagon* type, orange-yellow blooms, small in size. A Lily more for the specialists than the ordinary gardener. PD 5 in. Partial shade, humus and good drainage. Flowering bulbs, each 75c.

Chalcedonicum

CHALCEDONICUM-215-A beautiful Lily from Greece commonly known as the Scarlet *Martagon*, a gorgeous, waxy, Turk's Cap Lily unspotted and nodding, whose intense scarlet blooms rival all others of the color. Seems most at home in a fairly heavy but well drained loam in full sun. Likes plenty of leaf mold. A gorgeous jewel well worth growing. Generally requires a season after planting to become established. Try it among clumps of Russian Sage (*Perovskia*) whose silvery blue flowers and gray foliage provide an admirable foil for the intense scarlet. July. Ht 3 to 4 ft. PD. 3 in. Choice bulbs, each \$4.25.

Lilium Candidum

The Lily of antiquity was undoubtedly Candidum, the Madonna Lily. Materlinck refers to this loveliest of Lilies when he says: "The great white Lily, the Lord of the gardens, the only authentic prince among all the commonalty . . . with his invariable six-petaled chalice of silver, whose nobility dates back to the gods themselves, the immemorial Lily raises his ancient sceptre, august, inviolate, which creates around it a zone of chastity, silence and light."

But be you poet, painter or just plain gardener, this grand old Lily can make your garden outstanding. Candidum is a Lily to plant generously, use it in groups, or masses, line the path with it and your garden will become truly a hallowed spot.

In planting this Lily, wisdom will guide you to use only freshly dug Oregon grown bulbs. The war years have proven this. Climate and soil conditions give these bulbs a vigor not present in the older strains.



CONCOLOR



MADONNA LILY

*A thing of beauty
is a joy forever.*
—Keats.

CANDIDUM (Type)—195—The Oregon grown strain of this fine Lily, vigorous and healthy, has during the past decade, made north-west grown Lilies so greatly in demand. In fact the demand has been so heavy that year after year we decline far more orders than we ship. This Lily thrives in ordinary garden soil, with very little if any plant food added. Full sun is best though partial shade will do. Plant with top of bulb only an inch or two below the surface and cultivate with extreme care as the roots are almost at the surface. Be sure drainage is good. This Lily of all Lilies deserves planting in quantities—emblem of purity, the inspiration of poet and painter down through the ages, truly a benediction to the garden as June fades into July—its delightful fragrance is equaled by no other Lily. This year we offer a limited stock of Extra Selected bulbs, each \$1.00, Three \$2.75, Dozen \$11.00. Smaller, good flowering bulbs, each 60c, Three \$1.65. Special—We have a limited supply of Jumbo size, each \$1.40. August-September delivery only. **All are Oregon grown—fresh dug.**

CANDIDUM Salonikae—205—This is a comparatively new strain of this grand old Lily. It was discovered near Salonika, Macedonia some years ago and is still quite scarce. Considered by experts to be more resistant to disease, it is also desirable for early blooming, coming about a week earlier than the usual variety, thus extending the season. We are most happy to offer it in a limited way. All stock is Oregon grown. Selected flowering size bulbs, each \$1.50. August-September delivery only.

Candidum, Oregon Hybrid

CANDIDUM—200—This is a new seedling type, introduced for the first time. It has been reselected for several years from crosses between L. Candidum Salonika and the best English types. Blooms are larger, plants remarkably disease resistant. When I checked last blooming season, they were far superior to any Candidums I've ever seen. Truly the answer to Lily lovers longing for better and better strains. Choice selected bulbs, each \$1.35, Three \$3.75. Selected large bulbs \$2.00. August to mid-September delivery only. Early orders and early planting urged.

CROCEUM—228—The "Cottage Garden Lily" or "Orange Lily", ideal for the perennial border where it makes a bold, dazzling display either in full sun or part shade. In Ireland its rich orange color has made it the emblem of the Orangemen. A hardy Lily, usually free of disease and not particular as to soils. Croceum blooms about the same time as Regal. Try these two Lilies with a background of blue Delphinium and Yuccas and a ground cover planting of purple Violas or Pansies. Ht 3 to 6 ft. June-July. PD 5 inches. Selected flowering size bulbs, each \$1.15, Three \$3.20.

CONCOLOR—222—A brilliant scarlet Lily for rock garden or the front of your border. Blooms are star-like, held upright and freely produced. Ht 1 to 2 feet. Try it back of or among a mass of low-growing blue flowering plants and you will have a delightful picture. PD 3 in. Full sun or partial shade. June. Likes plenty of leafmold and tolerates lime. Flowering bulbs, each 45c, Three \$1.25.

CONCOLOR Racemosa—221—An improved form produced in Canada by Mr. Skinner. The stems are taller, two to three feet, and very vigorous with 18 to 26 blooms each. Flowers larger than the type. a brilliant sealing wax red. Each 85c, Three for \$2.35.

Crow's Hybrids

CROW'S HYBRIDS—230—These are selected seedlings of a magnificent strain of trumpet Lilies, a crossing of L. Sulphurgale-L. Princeps. Mostly they are huge white blooms with colored exteriors. Occasionally they are greenish-yellow to cream and pale yellow. Blooming after the Regals are through, they become a distinct addition to the garden. Ht 5 to 6 ft. PD 6 in. Extra selected bulbs, each \$1.35.



CROW'S HYBRIDS



DAURICUM

**NEW LILY CHART PUBLISHED BY
Edgar L. Kline**

Grower, importer and hybridizer of fine
Lilies

After several years of exhaustive research Mr. Kline has now completed a comprehensive chart with over 2700 items of data about more than 225 varieties of Lilies. It lists heights, colors, soil preferences, exposures, planting depths, blooming seasons, cultural notes, propagating data, flower types and copious additional information. All data is presented in easy reference form and may be seen at a glance.

Lily specialists, garden clubs, schools of horticulture, libraries, hybridizers, growers, nurserymen and dealers will find this new chart invaluable. Order one for your Garden Club.

The chart is eight large pages on heavy paper. Mailed postpaid, \$1.00.

FIRE KING



*When the yellow Lily flowers in the meadows,
and the red in dry land . . . then, methinks,
the flowering season has reached its height.
—Thoreau.*

DAVIDI-252-Improved form. This attractive Lily is worthy of a place in every garden. It somewhat resembles *L. Tigrinum* with blooms smaller and more refined. Cinnabar-red with black dots and numerous flowers to a stalk. Happy in any good, well drained soil in full sun. Mid-July. Ht to 6 ft. PD 5 in. Plant against white *Weigelia* or other shrub with white flowers in July. Selected bulbs, each 55c.

DAVIDI Oriole-260—A fine new break in this strain. A seedling selected by Miss Preston in Canada. Pale to golden-orange. Culture same as type. Award of Merit Royal Horticultural Society. Selected bulbs, each \$2.25.

DAVIDI Willmotiae-872—Formerly listed as *L. Willmotiae*. This is a fine Chinese Lily, typically Martagon with tightly recurved flowers, bright orange-red spotted black, often as many as 20 on the gracefully curving stalk. Blooms earlier than type, culture same. A free blooming attractive Lily. Choice Selected bulbs, each 55c, Three \$1.55. Smaller, good flowering bulbs, each 40c, Three \$1.10.

DAVIDI Unicolor-876—Syn. *L. Sutchuenense*. Formerly listed as *Willmottiae Unicolor*. A dwarf form, seldom over 3 feet, with strong stem, yellow with few if any spots. You will find it an excellent performer in the garden. Choice selected bulbs, each 85c, Three \$2.35.

DAVIDI Macranthemum-256—Discontinued.

DAYMOTTIAE-262—Discontinued.

DALHANSONII-250—A handsome hybrid Lily not only gorgeous in color but an eminently satisfactory grower, vigorous and easy culture. Blooms are thick petaled, recurved, similar to *Hansoni*, one of the parents. The color is a deep glossy mahogany-red, almost a purple-brown. As many as forty blooms have been reported on one stem. For an outstanding garden picture, group *L. Dalhansoni* with *L. Hansoni* and along with them feathery *Meadow-Rue* (*Thalictrum Aquilegiaefolium*) and purple *Violas* in the foreground, all against a background of dark evergreens such as *Pine* or *Yew*. Plant *Dalhansoni* 5 inches deep, partial shade, good drainage. Ht 4 to 5 ft. June. Strong selected bulbs, each \$3.75.

Fire King

FIRE KING-310—Experts who have seen this new hybrid acclaim it not only one of the finest of Lilies but a truly important addition to new garden plants. It produces a magnificent spike about four feet tall with as many as forty vermilion-scarlet blooms beautifully arranged, held horizontal to the stem. *Fire King* multiplies quite fast and is very easy to grow. An established planting is one of the most vivid color displays in the garden in late June and early July. PD 5 in. Choice flowering bulbs, each \$3.75, Three \$10.35.

Duchartrei

DUCHARTREI-282—Syn. *L. Farreri*. This is a very rare Lily from the mountains of China and Tibet, an exquisite jewel of which we never have enough to meet demands. Its slender stems, two to four feet tall, carry up to a dozen pendant, recurved blooms, pure white, spotted lightly wine-purple and touched with green in the throat. Truly a lovely Lily. The bulbs of this gem are small, seldom as large as a marble but they send up a vigorous stem. This variety like several others, sends out a stem which wanders around under ground before emerging sometimes as much as two feet from the bulb. Bulblets form along this stem which result in large colonies. Try it among low growing *Azaleas* and *Rhododendrons* where you do not cultivate the surface. All our bulbs are grown from seed to insure disease free stock. It likes plenty of humus, a moist, well drained soil and partial shade. June. PD 4 in. Scarce. Very small, flowering size bulbs, each \$2.75, Three \$7.60.

DAURICUM (Type)-268—A useful, very colorful dwarf Lily for borders with upright blooms. Vase-shaped, light to deep orange, yellow at the base, spotted darker. Ours is the true form quite rare as *Elegans* has frequently been substituted. All the *Dauricums* are good among *Lavender* or plants having purple, blue or lavender flowers. Ht 1 to 1 1/2 ft. PD 4 in. Each 50c, Three \$1.40.

DAURICUM Wilsoni-272—An August flowering form with deep apricot blooms, spotted mahogany, 2 to 3 feet tall. Especially welcome in the late summer border. Selected bulbs, each 55c, Three for \$1.55.

CORDATUM-224—Similar to that rare woodland Lily, *Giganteum*, with broad heart-shaped leaves. Trumpet shaped flowers, creamy white. Enjoys partial shade in open woodland. Cover bulbs with not over an inch of soil and protect early spring growth from frost. Likes a cool moist soil with ample humus. Ht 4 to 6 ft. July. Seldom blooms till second year. Each \$1.00, Three \$2.80.

FORMOSANUM LATE (Page 9)



Lilium Elegans

These are dwarf, 12 to 18 inches but the blooms are large and upright on the stems. Very showy in the rock garden or massed in the border. For sheer color they are seldom equaled. Try them among a colony of Funkia or White Heuchera for an effective display. Elegans is a healthy, vigorous lot. Culture the easiest, thriving in any well drained loam in a sunny spot. June-July. PD 4 in.

ELEGANS Aureum-297-An orange-yellow form, conspicuously spotted deep yellow. A desirable variety that is popular. Each 85c.

ELEGANS Mahogany-299-Also known as Mahony. Deep mahogany-crimson flowers on fifteen inch stems. An attractive variety and we never have enough. June. Each 55c.

ELEGANS Mixed-300-Yellow through apricot to deepest crimson. A mass of them is a riot of color. These and all other of the group are excellent in pots. Each 55c, Three \$1.55.

GUINEA GOLD-366-A new hybrid, Martagon type. Buds are pink, flowers yellow, thickly spotted brown. A healthy vigorous Lily, best in partial shade. Guinea Gold will be very popular when more plentiful and better known. Try planting it among a mass of blue flowering *Anchusa myosotidiflora* against a background of green. June-July. Ht 4 to 5 ft. PD 5 in. Selected bulbs, each \$3.75.

GREEN MOUNTAIN HYBRIDS-363-By some of the experts this is considered the finest strain of new hybrid trumpet Lilies. They were produced by the late Dr. Abels, a true Lily connoisseur, and only recently available. The buds are bronze-green to pink with some a greenish-sulphur. Interiors are white to cream with throats ranging through yellow and orange to greenish-yellow. They bloom three to four weeks in mid-summer. Truly magnificent. Try with a foreground of light pink Phlox and a background of evergreens. Ht 3½ to 6 ft. PD 6 in. Selected bulbs, each \$1.10, Three \$3.05.

DAHLHANSONII (Page 8)



Lilium Formosanum

Syn. Philippinense

This is a lovely trumpet Lily becoming more popular every year. It is pure white within, suffused with wine-purple outside or occasionally white, fragrant and long blooming. Stems are slender, varying from two to six feet tall. The late form starts blooming early in the fall and continues until frost. Last year in our planting they were still in full flower in mid-November. In California and mild southern sections, they keep blooming well into the winter, sending up new shoots which continue the display. PD 5 in.

A late long-flowering Lily

FORMOSANUM Late Variety-316-This has the longest flowering season of any Lily. Height 5 to 6 feet, sometimes eight or more in the south. Bulbs very small considering the size of the plants. Lovely with Anemone Japonica "Alice" or with masses of hardy Fall Asters or Chrysanthemums. September to frost. Extra select bulbs, each 85c. Small, good flowering bulbs, each 45c, Three \$1.25.

Even small bulbs produce five-foot stems.

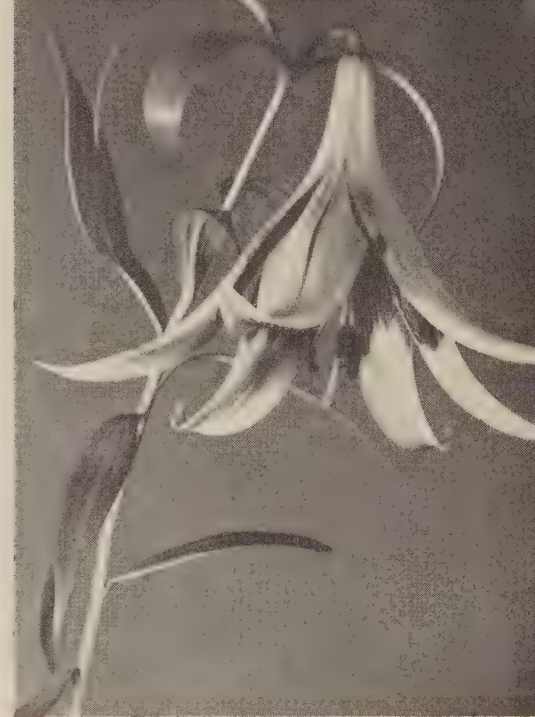
FORMOSANUM Early-330-Known as Price's variety, growing barely a foot high, blooming late July into August. Good in rock garden or front of the border. With some of the summer blooming Violas massed around it the effect should be lovely. Good, small flowering bulbs, each 50c, Three \$1.40.

GRAYI-360-A delightful little Lily somewhat resembling the lovely Canadense. Outside of blooms is crimson; orange inside with many reddish-purple dots. Try planting it with a ground cover of ferns against a blue flowering hydrangea. You'll be surprised how the brilliance of the Lily will enliven the blue of the shrub. A moist location in partial shade suits this Lily best. Our bulbs are the true form and stock is limited. Ht 2 to 3 ft. PD 4 in. Flowering size bulbs, each 70c.

GLOW-370-One of the earliest Lilies, late May into June. An improved hybrid form of *L. Philadelphicum* with larger flowers and heavier foliage. Cup-shaped blooms, a deep glowing reddish-orange in two foot stems. Try with a ground cover of deep ultramarine blue Swiss Pansy "Ullswater". Full sun. PD 4 in. Selected bulbs, \$1.00, Three \$2.80.

A Woodland Giant

GIGANTEUM Himalaicum-350-The giant of all Lilies, sends up imposing stalks ten to twelve feet, crowned with huge white trumpets, as many as thirty to a stem, striped and splashed inside with red-purple. If you have the right setting for this gem, it will reward you richly. The ideal location is in open woods where the sun just peeps through, where the soil is always damp but also well drained. Likes to be protected from winds and the soil should be rich with humus, in fact loose and fluffy with it. This Lily produces a very large bulb which upon flowering, dies, leaving behind several offsets which may be reset and these in a few years will bloom. Cover top of bulb not deeper than one inch. We offer selected medium size bulbs which should flower the second or third year, each \$2.75.



NEPALENSE (See page 13)

HUMBOLDTII Magnificum-398-The most striking of our natives. Strong grower, 3 to 4 feet tall, flowering freely. Blooms reflexed, golden-orange, dotted maroon, each dot bordered crimson. Try against Buddleia Ile de France with a foreground mass of Aster Frikarti (Wonder of Staffia). This Lily usually takes a year after planting to become established but is well worth the waiting. PD 6 in. July. Each \$1.65.

GIGANTEUM HIMALAICUM





HANSONII

Lilium Hansonii

HANSONII—380—This is one of the most satisfactory of all Lilies for garden planting, charming, distinct and unusual but even more important, it is of easy culture. Its Martagon type flowers are a rich orange-cadmium with mahogany-brown spots, petals thick and waxy in texture. The delightful color fades easily so partial shade is best. Blooms mid-June into July. One of the most certain of all Lilies, beloved by both beginners and the keenest specialists. The lovely white Martagon Album, opening just before Hansonii is a good companion and *L. Dalhansonii* may well round out the picture. As a foil and ground cover try the dwarf shrub *Philadelphus macrophyllus* It also protects the early starting Lily shoots from frost damage. Plant against a background of dark foliage to enhance the display. Seldom do we have enough of this popular Lily so get your order in early. Ht 4 to 5 ft. PD 5 in. Selected flowering bulbs, each \$1.25. A few large bulbs, each \$1.75.

KELLOGGII—406—This is our native West Coast Martagon, with fragrant nodding flowers, pale pink with a yellow stripe through center of each petal and finely spotted with maroon. An attractive, dainty Lily, demanding a moderately moist, partially shaded spot with good drainage and preferably a gravelly soil. Ht 2 to 3 ft. June-July. PD 4 in. Supply very limited. Flowering bulbs, each \$1.75.

MAXIMOWICZII Wadai—530—This Lily is essentially a refined Tiger Lily with all the good points of the latter and as easily grown. If you have had difficulty getting Tiger Lilies that are free of Mosaic, here's the answer to your prayer. Orange-red, spotted purple-brown. By planting both the varieties we offer you may have them in bloom from late in July until well into September. For background try white *Weigelia* and mass them with lavender fall *Asters* and yellow *Heleniums*. Add also a few plants of *Rudbeckia Purpurea* to the group. Full sun or partial shade. Ht 4 to 6 ft. PD 5 in. A few selected large bulbs, each 55c. Good flowering bulbs, each 40c.

MAXIMOWICZII Wadai, Late Variety—536—Same as above but blooming in September. Choice flowering bulbs, each 40c, Three for \$1.10.

MARTAGON—506—This is the true purple Martagon Lily, often referred to as the "Turks Cap." Its culture is easy in either sun or shade. Tall spikes carry numerous waxy light purple flowers, spotted with deep purple. Generally takes a year to establish itself before blooming. Ht 3 to 5 ft. PD 4 in. June-July. Flowering bulbs, each \$1.50.

MARTAGON Cattaniae.—Not available this year.

MICHIGANENSE—556—Another native, this one from the middle-west, possibly a hybrid between *Canadense* and *Superbum*. Blooms vary from a brilliant red to shades of yellow, profusely spotted with purplish brown, petals reflexed. A good Lily for the woodland garden where it finds partial shade and ample moisture. July. Ht 2 to 5 ft. PD 5 in. Flowering bulbs, each \$1.00.

Marhan

MARHAN, H. J. Elwes—596—A comparatively new and rare hybrid Martagon x *Hansonii*, reliable and vigorous. Color, a lustrous orange overlaid with purple and a splash of deep reddish purple on each petal, producing the effect of burnished copper. By many considered the most beautiful Lily in existence. Group it with others of the family against dark backgrounds and use low growing, contrasting color plants for the foreground. These *Hansonii*-Martagon Lilies may well become the nobility in your garden picture. Assuredly they are true aristocrats. Ht 5 to 6 feet. June-July PD 5 in. Stock extremely limited. Selected flowering bulbs, each \$6.75.

MARHAN—593—For those who have longed for some of these fine hybrids but hesitated due to the price, here's an opportunity. We have been growing this strain from seed and can now offer a limited number in unnamed seedlings. They are exceptionally fine and worthy of trial. Colors and types similar to the named form and equally as vigorous and reliable. We offer them only as mixed seedlings. Height four to seven feet. June-July. PD 5 in. Each \$3.95. Stock limited.

L. MARITIMUM—520—A beautiful native species, best grown in moist woodland, in partial shade. Flowers bell shaped, deep crimson, spotted maroon. A dainty though capricious plant with which cultural care is essential. Plant 4 inches deep in well drained soil abundant in leaf mold and supply with adequate moisture during the growing season. Ht 1½ to 3 feet. July. Selected flowering bulbs, each \$1.75.

A Book About Lilies LILIES for American Gardens

By George L. Slate

Here's a thoroughly American book by my good friend George L. Slate, a most interesting book written from a wealth of personal experience and extensive research. Either for an amateur or a Lily specialist this book is invaluable. It covers every phase of Lily culture including soil, site, planting, maintenance, winter protection, pests, diseases, propagation and hybridizing.

Illustrated with many photographs and sketches, it describes more than 280 varieties and how to use them in the garden. Personally I think so well of the book that I keep copies on hand and will mail it, postpaid, at the publishers price. Even if you grow but a few varieties, this book will be worth far more than the price.

\$3.50 per copy, postpaid.

MARTAGON ALBUM



Martagon Album

MARTAGON Album—510—Few, if any Lilies offer a more beautiful effect than a well grown clump of this graceful and charming variety. Its small delicate Turk's Cap blooms are pure white and sweetly fragrant. Borne on 4 foot stems from mid-June well into July. Try it with a mass of very tall light blue iris back of it against an evergreen background and on either side a plant of that lovely light pink oriental Peony, Tokio. In the foreground use a wide drift of pale blue *Viola* "Maggie Mott". There are literally scores of pictures you may develop in your garden with Lilies playing leading parts, and *L. Martagon Album* may well be cast in a leading role. PD 4 in. Succeeds in light or heavy soils. Selected flowering bulbs, each \$1.25, Three \$3.45. A few extra choice larger bulbs, each \$1.75, Three \$4.85.



SLOCUM'S "ACE"

Lilies for Garden and Greenhouse

Lilium Longiflorum

New Strains Developed and Grown in Oregon

In the world of Easter Lilies, Oregon has made a tremendous contribution during recent years. "Croft," "Estate" and now the new "Ace" Lilies have pushed quality up to an all time high. These wonderful new strains, developed and grown right here in Oregon are far superior to the older imported stocks both for the garden and greenhouse. Probably the best news of the moment regarding them is that after extensive and repeated careful tests we can offer most of them as hardy outside even in New England. They give us huge pure white trumpet Lilies for mid-summer gardens, a long wanted group. For the greenhouse, these new varieties are absolutely supreme. Try them and I'm sure you will be pleased. We have an exceptionally fine stock of these bulbs which can be shipped starting in October.

The Estate Lily

LONGIFLORUM "The Estate Lily"-440-Without question the finest of this species ever introduced. Under glass "Estate" produces stems up to five feet tall with six to nine huge white trumpets at least double the size of the old imported Easter Lilies. For size of bloom, substance of flower, stature, ease of culture, hardiness and long lasting, "Estate" far surpasses all other varieties. As an early spring Lily in the greenhouse, none other is its equal. In the garden, with nominal protection, it is hardy even through New England winters. Altogether, a truly wonderful Lily. Ht 4 to 6 ft. PD 6 inches. Extra selected Jumbos, each \$1.35. Large bulbs, each 85c. Choice flowering bulbs, each 70c. Three flowering size \$1.95.

LONGIFLORUM "Slocums Ace"-435-An exceptionally lovely new Lily developed here in Oregon by Mr. Clark Slocum. It has proved one of the rare Longiflorums to be outstanding as a garden Lily. Very free flowering. A wonderful Lily for massing as it grows rather dwarf, 1½ to 2½ feet tall. The blooms are huge and well held on strong stems. Quality and texture even exceed the famous "Croft Lilies". This new Lily has proven a very fine forcer also. The bulbs we offer are a reselected strain direct from the fields of the originator. Mr. Slocum personally selects the bulbs to fill my orders. "Ace" has shown unusual resistance to the various Lily diseases and we look for it to be truly "Ace High" when better known. In the garden it blooms late July into August. PD 6 in. We offer a limited quantity of Large Selected bulbs, each \$2.50. Flowering size, each \$1.75.

LONGIFLORUM "Snow Drift"-450-An excellent new strain from Australia which has proven most floriferous with individual blooms measuring to 7 inches. In form, this Lily somewhat suggests that of Auratum. The delightful fragrance has been described as touching that of Magnolias. The wide rounded petals are pure white and of good substance. Mid-summer blooming. Ht 4 to 6 ft. PD 6 in. Choice flowering bulbs, each 75c.

LONGIFLORUM Creole "White Lady"-455-Easily the finest of the famous Creole strain. Originally selected by U. S. D. A. and reselected in our Oregon fields. Not a huge flower like Croft or Estate but a more dainty, refined bloom, still having real quality and charm. Primarily a forcing Lily for the greenhouse. Not recommended for outside except in mild sections. Ht 3 to 4 ft. Choice flowering bulbs, each 75c.

LONGIFLORUM "Croft"-430-This famous forcing Lily, unquestionably the finest of all "Easter" lilies, originally grown only in southern Oregon, is similar to Estate but not so tall and a bit less hardy outside. In the greenhouse it is hard to beat. The huge blooms are freely produced in 1½ to 2 foot stems. Their remarkable substance and ease of culture bids fair to make them increasingly popular. Mid-July. PD 6 inches. Full sun. Selected large bulbs 85c. Choice flowering bulbs 55c, Three \$1.50.

ESTATE LILY

Lilies in the Greenhouse

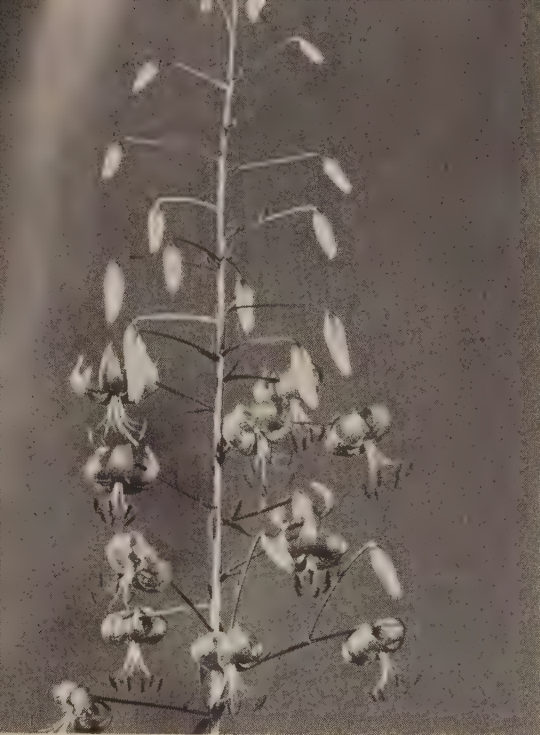
When the bulbs arrive, they should be potted at once in six or eight inch pots with good drainage, using a compost of two parts good fibrous loam, two parts pulverized peat or leaf mold and one part sharp sand.

After potting place in a cold frame, cool greenhouse or other shelter where night temperature will be around 40 to 45 degrees and allow to remain there six to eight weeks, or until top growth appears. Keep moderately moist but do not overwater. If soil was reasonably moist at potting time, very little additional watering will be needed. After top growth starts, move to greenhouse where night temperatures of 60 degrees can be maintained. Ventilate whenever possible, water in the mornings so foliage will be dry at night.

Flowering time depends upon many circumstances. Buds should show about six weeks before opening. Careful regulation of temperatures can hurry or retard. 55 to 60 degrees with light shading is recommended for bud development. Give liquid fertilizer sparingly as buds begin to show.

See page 19 for list of Lilies for growing in the greenhouse.





MAXWILL

Maxwill

MAXWILL-540—One of the most striking Lilies of recent introduction and withal one of the most satisfactory doers in the garden. The color is brilliant orange-red with black spots and brick-red stamens. Maxwill is a hybride of *L. Davidi* Willmot-tiae and *L. Leichtlini* var. *Maxomowiczi* with the most desirable qualities of both. Its very large blooms are held aloft on stiff stems 5 to 6 feet tall with as many as thirty to forty on a stalk. The beginner will find this an ideal variety to stimulate his interest and to the collector it is a "must". Plant it against a background of that lovely perennial, *Thalictrum Dipterocar-pum*. July blooming. Easily established. PD 5 in. Selected bulbs, each 85c. Choice flowering bulbs, each 60c.

PARRYI



"Flowers are the beautiful hieroglyphics of Nature, by which she indicates how much she loves us."—Goethe

NEW

Leucanthum--Sargentiae Hybrids

DeGraaff Strain

LEUCANTHUM, SARGENTIAE Hybrids-415—An extremely vigorous and free flowering strain of trumpet Lilies developed here in Oregon. They have all the good qualities of the parents including hardiness and unsurpassable garden performance. Quite a bit of variation is found among these hybrids but in general they produce huge funnel or trumpet shaped blooms, held horizontally with exteriors varied from pure white to deep purple. The insides are mostly white with a golden throat and deliciously fragrant. They bloom from early to late July. Ht 4 to 6 ft. PD 6 in. Selected bulbs, each \$2.25.

PHILADELPHICUM-612—One of the few up-right flowering cup-shaped native Lilies and likewise one of the most brilliant. The vivid orange-scarlet blooms with large dark maroon spots are held on stems 1½ to 3 feet tall. A woodland Lily not suited to border planting. Enjoys partial shade, very sharp drainage and protection from heavy winter rains. June-July. PD 3 in. Produces a small bulb. Flowering size bulbs, each 40c.

PHILADELPHICUM MONTANUM-613—A relatively rare form of this Lily, native to the Rocky Mountains, formerly listed as *L. Montanum*. Varies from deep crimson through orange to an occasional one of clear citron-yellow, all spotted with deep purple. Ht 2-3 ft. PD 4 in. Early summer. Each 65c.

Spring Planting

We can not consistently recommend spring planting of Lilies. There are a few such as *Regal*, *Centifolium Hybrids*, *Henryi* and others that do not seem to resent it but the great majority should be planted as soon as possible after their digging at maturity in the fall.

However, sometimes it is impossible for various reasons to plant in the fall and for these customers we will pack their orders all ready to ship and hold them in cold storage until spring. These orders, however, must be received in the fall or the bulbs will not be available as we do not carry over but a very few varieties. There is no charge for cold storage but **PLEASE send orders EARLY.**

OCCIDENTAL-580—A rare native Lily from the west coast which accommodates itself nicely to garden conditions. Its small bell-shaped blooms are orange-red with throat spotted maroon. As the petals age they become recurved. Like most native Lilies, partial shade is most to its liking. Prefers a lime free soil with plenty of leafmold or peat moss. July. Ht 2 to 4 feet. PD 4 inches. Flowering bulbs, each \$2.00.

SEE PAGE 19 FOR QUANTITY PRICES

PARRYI-600—Of all the lovely Lilies found native in this country of ours, none are more beautiful than this. It's found in the high Sierras of central and eastern California and in Arizona. The deliciously fragrant blooms are pale lemon-yellow to citron-yellow, lightly spotted brown, funnel-shaped with tips gracefully recurved. This Lily is a bit finicky in its tastes but withal so charming, it is, worth extra effort. Ht to 6 ft. PD 4 in. Early July. Light soil, rich in humus, plenty of moisture but good drainage. Choice flowering bulbs, each \$1.50.

PARDALINUM-590—One of the easiest grown of all native Lilies is this brilliant gem from the Pacific Northwest. Perfectly hardy and not particular as to location though happier in partial shade with plenty of moisture but good drainage. The Martagon type blooms are quite recurved, deep orange shading to crimson at tips of the petals. Well grown plants carry up to 30 blossoms. This Lily is ideal along a stream or beside a pool with ferns as ground cover combined with blue or lavender flowered *Hosta* (*Funkia*) Mid-June-July. Ht 4 to 7 feet. PD 4 in. Flowering size bulbs, each 50c, Three \$1.40.

SZOVITSIANUM (Page 13)





PARDALINUM (Page 12)

MICHAUXII (Carolinianum)-550-A native Lily from the southeastern states, somewhat similar to Superbum. One of our less hardy Lilies but satisfactory in a protected place. Fragrant, bright orange blooms in late July. Ht 1½ to 3 feet. PD 5 in. Flowering size bulbs, each 85c.

MONADELPHUM-555-A scarce and beautiful lily we have not been able to offer for several years. Color a deep, rich yellow almost unspotted, wine-red at the base. Medium size, semi-reflexed with an almost overpowering fragrance. Not an easy lily but so beautiful you will want to grow it. Ht 3 to 4 ft. June. PD 4 in. Sun or part shade, moist clay loam. Each \$3.25.

SZOVITSIANUM-810-A rare Caucasian lily closely related to Monadelphum but blooming somewhat earlier. In fact, one of the earliest of all, and valuable for this reason. Blooms are pale straw-yellow, freely spotted purplish black. A very beautiful and desirable lily. Ht 3 to 5 ft. PD 4 in. Generally requires a year to establish. Partial shade, ample humus. Each \$3.25.

Sunset Lily

PARDALINUM Gigantum, The Sunset Lily-596-This gorgeous giant of a Lily is of the easiest culture, simply fool-proof. Very hardy, vigorous, dependable and increases rapidly. It stands five to eight feet tall with up to 30 brilliant crimson and golden yellow blooms, profusely spotted purple-amber-brown. The sturdy stems demand no staking. A group of six or a dozen when in bloom makes a striking picture. Plant back of a mass of gentian-blue Chinese Delphinium against a dark evergreen background and your July garden will take on added brilliance. Planting depth 5 inches. Sun or partial shade. July. Selected large bulbs, each 60c, Six for \$3.30. Good flowering size, 40c each, Three for \$1.00, Dozen \$3.70, 100 for \$29.50.

NEPALENSE-570-A rare Himalayan Lily with funnel shaped blooms of a most interesting and unusual color, greenish yellow with the throat heavily stained a rich dark purple. Of doubtful hardiness in the north where it should be grown in the greenhouse. OK outside in the south where freezing is light. The flowers are large and solitary or very few in number. 2 to 3 feet tall. PD 4 inches. Partial shade and a moist well drained soil. July flowering. Selected bulbs, each \$2.50.

Rare Burma Lilies

Nepalense, offered above, is the only one of the rare Burma lilies we can supply this year. A large shipment of others, Sulphureum, Bakerianum, Ochraceum and Wallichianum was held up by a strike of Calcutta dock workers and became a complete loss. We are sorry to disappoint you on these but shall hope that they will be available next year.

MARGARET JOHNSON-480-This is a new hybrid of our old favorite Tiger Lily. The blooms are held horizontally or erect in a truly charming manner. Color is a delightful salmon-orange, spotted mahogany. It flowers freely on sturdy stems 4 to 5 feet tall. Plant in sun or partial shade. This is the first offering of this variety which will be popular when plentiful. Plant it in front of a purple leaved Plum that has been pruned into a bush form. You will enjoy the effect. August. PD 6 in. Choice flowering bulbs, each \$3.50.

Special No. 1

Late Varieties

Eight fine lilies flowering during the latter half of the summer affording a wide range of colors and types. All of easy culture.

Maximowicz -Late	Formosanum -Late
Havemeyer Seedlings	Estate
Prestons Hybrids	Speciosum Rubrum
Dauricum Wilsonii	Henry

One bulb each of eight varieties, all labeled, flowering size for \$6.25, postpaid.

PYRENAICUM-666-Commonly known as the Yellow Turks Cap and especially desirable as among the earliest of all Lilies to bloom. The gay little Martagon type blooms are a rich greenish yellow spotted black with prominent anthers bearing brilliant scarlet pollen. A hardy little Lily not particular as to soil and excellent for partial shade in the wild garden. Ht 2 to 4 ft. PD 3 inches. May-June Each \$2.75.

PYRENAICUM Rubrum-667-An orange-red form of the above, spotted with maroon. The habitat of this species is the Pyrenees mountains where it grows on the edges of woodland in moist loam with ample humus. A good subject for the wild garden. It has been in cultivation since 1629. Blooms late May to early June. PD 3 in. Height 1½ to 2 feet. Oregon grown bulbs, each \$2.50

POLYPHYLLUM-620-This fragrant, nodding, white Lily, splashed with purple inside is one of the rarest and not the easiest to grow. The high valleys of famed Kashmir are its home. The soil is moist but well drained and thickly matted with leaves. Here in the Northwest we find it does well out in the sunshine but where the sun gets really hot, partial to full shade is probably best. A good location would be the Rhododendron bed where the surface is shaded but the stems reach up into the sunshine. Ferns would be an ideal ground cover. Ht 4 ft. PD 4 inches. Late June. Selected bulbs, \$6.75.



SUNSET LILY

"The garden mystically . . . a place of spiritual repose, stillness, refreshment, delight."

—John Henry Newman.

New Hybrid Lilies

Miss Preston's Hybrid Lilies

The Lily world is deeply indebted to Miss Isabelle Preston of the Central Experimental Farm, Ottawa, Canada, for her very wonderful contributions in the field of new hybrid Lilies. It has not been my privilege to know this famous Lily expert but her fine introductions seen destined to play a major role in the future of hardy Lilies both in America and abroad. Not only do these new hybrids offer a most gratifying degree of hardiness but their forms are beautiful and many are among the most brilliantly colored of all Lilies. Great popularity is predicted for them when more plentiful.

BRENDA WATTS—180—Here's a bold brilliant Lily which seems to have everything, rugged constitution, easily established, the flower arrangement is about perfect and year after year it seems to do better. The tall graceful 5 foot spikes hold numerous out-facing blooms, of a soft flaming orange-red, dotted purple-red towards the center. Truly a gorgeous Lily that will be much sought after as it becomes better known. Sun or partial shade. July. PD 6 in. Stock limited. Selected bulbs, each \$1.35.

CORONATION—226—Another recent introduction. Three foot tall spikes hold up to 20 slightly pendant recurved flowers of clear yellow with a few brown spots. A most delightful color. The plant is healthy, vigorous and admirably behaved under average garden conditions. July. PD 6 in. Sun or partial shade. Limited stock. Flowering bulbs, each \$3.75.

EDNA KEAN—290—This Lily is similar to Brenda Watts but a deep cherry red, a shade not common among Lilies. Easy culture in either full sun or partial shade. Plant is to contrast against tall spires of lavender-blue Pacific Hybrid Delphinium and use the beautiful Gypsophila Bristol Fairy as a foreground. Ht 3 to 4 feet. PD 6 in. June-July. Supply limited. Choice flowering bulbs, each \$1.35.

LILLIAN CUMMINGS—420—Another valuable new hybrid with large reflexed blooms of a light orange-red held almost horizontal on sturdy 4 to 5 foot stems. This is a very striking vigorous Lily worthy of inclusion in any garden. July. PD 6 in. Choice flowering bulbs, each \$1.35.

Grace Marshall

GRACE MARSHALL—356—Another Lily that measures up to the high standards Miss Preston demands. The flowers are outward-facing, up to 30 in number, reflexed, on wiry erect stems. Color a lovely deep red with a few brown spots. July flowering. Ht 4 to 5 ft. PD 6 in. Sun or partial shade. Flowering bulbs, each \$1.30, Three \$3.60.

GRACE MARSHALL



SEE
PAGE 19
FOR
QUANTITY
PRICES

LYLA McCANN—470—A sister hybrid to Lillian Cummings and equally good. The out-facing blooms are orange, lightly spotted a shade darker. Like others of this group, it is a good Lily for any garden. Sun or partial shade. Ht 3 ft. PD 6 in. July. Scarce. Flowering bulbs, each \$1.35.

MOSQUITO—560—Here's a recent new hybrid with lovely small flowers very similar to L. Davidi var. Willmottiae both in color and shape. The Martagon type blooms are a deep orange-red, striking and effective, well spaced and held at right angles to the straight, sturdy stem. This new Lily will prove extremely popular when it becomes plentiful. Try it with Meadow-Rue and a carpet of purple Violas. The effect is delightful. Ht 4 ft. PD 5 in. July blooming. Selected flowering bulbs, each \$2.50.

Phyllis Cox

PHYLLIS COX—616—Here again Miss Preston offers a worth while new break, one of the most stunning of the newer hybrids. This one is a brilliant orange-red deepening towards the tips with the outside of the petals a lovely golden orange. For sheer color Phyllis Cox is hard to equal. As a vividly contrasting ground planting use purple Petunias and plant against a dark background. Ht 3 to 4 ft. Sun or partial shade. PD 6 in. July. Choice flowering bulbs, each \$1.35.

SPITFIRE—784—If Miss Preston had never introduced any other Lily than this distinctive and charming new variety, her fame as a hybridist would be secure. You will love its candelabrum form with vase shaped blooms facing upwards. The color is flame scarlet with reddish-brown spots and brazil-red pollen. Along with its lovely shape and stunning color. Spitfire is easy to grow and vigorously healthy. A clump of this Lily among a mass of lovely blue Chinese Delphinium will make the entire mass glow. Early July. Ht 3 ft. PD 5 in. Sun or partial shade. Choice flowering bulbs, each \$3.75.

HURRICANE—402—A distinctive charming Lily, with vase shaped flowers facing upwards and arranged candelabrum style. Color a brilliant cherry-red with a few dark spots. A lovely new hybrid worthy of a choice spot in your garden. Ht 3½ ft. Early July. PD 5 in. Limited supply. Flowering bulbs, each \$3.75.

MURIEL CONDE—564—This is a new Preston Hybrid. The large blooms are delightfully recurved, a rich golden-orange with darker spots. Extremely free flowering on wiry stems 4 to 5 feet tall. A healthy vigorous grower. If you want to try a worthwhile variety among the very newest, this is it. July. PD 5 in. Choice flowering bulbs, each \$1.75.

Preston's Hybrids Mixed

PRESTONS HYBRIDS Mixed—624—For several years we have been producing seedlings of the above hybrids. Many of them are similar to the named varieties but we offer them mixed and you will find them most interesting. All have been flowered in our fields and only the selected forms are sold. Colors range through reds, oranges and golds, an array of beauty unequaled in other groups of hybrids. Culture as with named varieties. Ht 3 to 5 ft. PD 6 in. Flowering bulbs, each 85c, Three \$2.35. Selected large bulbs, each \$1.15.

Lilies for American Gardens, by George L. Slate An invaluable Lily book. See page 10.

Bring Garden Success

Princeps Hybrid Lilies

These are hybrids of *L. Sargentiae* and *L. Regale*. They are a very vigorous, handsome and large flowered group flowering later the *Regale*, from early July into August. Their long buds resemble those of *Sargentiae* but the more open blooms are white stained with rose. Being even better plants than either of the parents, they fill a very real need for a mid-summer Lily to follow the *Regale*. It is by carefully selecting the varieties for your plantings with an eye to their flowering seasons and picture value in the border that you can plant garden pictures of rare beauty. These hybrids and many others offer the material and with painstaking study and observation you can achieve very marvelous results.

PRINCEPS, G. C. CREELMAN (True)-630-This is considered one of the finest of the *Regal* x *Sargentiae* hybrids now in commerce, producing truly extraordinary heads of trumpet type bloom late in July. The long tubular blossoms are white with lemon yellow center and brownish-lavender exterior. Extremely valuable in the mid-summer border. It was considered by the late E. H. Wilson superior to either of its parents. Full sun or partial shade. Ht 6 to 8 feet. PD 6 in. We have but a limited supply of this Lily. Flowering bulbs, each \$4.25.

Princeps Creelman Hybrid Seedlings

PRINCEPS Creelman Hybrid Seedlings-634-This group of seedlings has won well deserved popularity. All are handsome trumpet Lilies similar to the true Creelman but they vary in blooming time from early July to mid-August, extremely valuable for this reason. Of these also we never have enough to meet the demand. Culture as above. Flowering bulbs, each 85c, Three \$2.35. A few extra select jumbo bulbs, each \$1.40.

PRINCEPS Creelman x Centifolium Hybrids-650-A grand strain of hybrids produced by Miss Beatrice Palmer of Cobble Hill, B. C., Canada. They are similar to their parents in appearance and extremely vigorous producing immense heads of white bloom in late July. Culture same as Creelman. Choice bulbs, each \$3.75.

PRINCEPS Shelburne Hybrids-656-A tall slender Lily of the *Regal-Sargentiae* type, flowering after the *Regals* are through. These hybrids are valuable to plant along with *Regals* that the display may extend several weeks longer. Scarce. Culture same as Creelman. Ht 5 to 6 feet. Flowering bulbs, each 95c.

Special No. 2

EARLY LILIES

Varieties flowering the first part of the summer. Eight kinds offering a wide color range including several rare ones. *Canadense Rubrum*, *Glow*, *Candidum*, *Tenuifolium Golden Gleam*, *Hansoni*, *Azalea*, *Martagon Album*, *Szovitsianum*. One bulb each, labeled, eight varieties. Postpaid.

SPECIAL \$8.35

Creelman Hybrids

DeGraaff Strain

CREELMAN Hybrids-638-A new selected strain of this wonderful Lily produced right here in Oregon, almost in the shadow of Mt. Hood. They have a degree of vigor seldom found among Lilies and when more generally available will be greatly in demand. This is our first offering of these new hybrids. They produce white or nearly white, trumpet type Lilies with yellow tinted throats and many have greenish exteriors. These hybrids vary considerable and I personally select the individual plants while in bloom from a field of thousands, marking them for segregation at digging time. We will select but a few hundred of these this year, so suggest you order early. Early July into August. Ht 4½ to 6½ ft. PD 6 in. Selected bulbs, each \$2.75.

Romaine B. Ware-Lilies

Questions You Have Asked---

HOW LATE CAN I PLANT?

Lilies may be planted any time the ground is not frozen up till mid-April, BUT for the best results they should be in the ground as soon as possible after they are dug in the fall. We dig and ship as soon as bulbs mature, from mid-August until early December. Some varieties, as noted in the descriptions, are not available after September while others can be had up to the early part of the New Year. However, many kinds are sold out early so the sooner you order the more likely you are to get those desired.

HOW CLOSE TOGETHER TO PLANT?

As a general rule ten to twelve inches apart is best. Small kinds like *Tenuifolium*, *Cernum* and others suggested for the rock garden do well six to eight inches apart. Vigorous kinds like *Regale*, *Henryi*, *Princeps* and others will be best fifteen inches apart as they tend to form clumps and crowding spoils the effect.

WHICH VARIETIES ARE HARDY?

Unless otherwise noted, all varieties are hardy throughout even the northern states provided they are protected from alternate freezing and thawing. If they freeze up solid the day after planting, they will be all right but give them a reasonably heavy mulching to prevent heaving and to protect from early injury by spring frosts. Follow planting depths and soil recommendations carefully and make sure of the drainage. If the fall weather is very dry, water thoroughly before the final freeze up. Lilies like many other plants resent going into winter in bone dry soil.

RUSSETT-720-Another of Mr. Skinners' *Philadelphicum-Dauricum* hybrids. They produce large clusters of showy, cup-shaped upright lilies of great vigor. Being comparatively dwarf, 1½ to 2½ feet, they are good in the foreground of the border. A clump makes a gorgeous show. Color is a deep burnt-orange or russet. Due to their early flowering, June, they are desirable with late blooming Iris. These hybrids are easy to grow and thrive in average gardens. PD 4 inches. Full sun. Choice flowering bulbs, each \$1.15, Three \$3.20.

SKINNERS ORANGE-772-A new hybrid of our native *Philadelphicum* and very much worth while. The bright orange blooms are spotted with brown and held erect on stems 1½ to 2 feet tall. An excellent border lily, probably best in partial shade. June. PD 4 in. Flowering bulbs, each \$1.15.

CREELMAN HYBRIDS





REGALE LILY

Try planting drifts of them against a fence covered with pink climbing Roses; here and there in the foreground use a few clumps of clear blue Oriental Iris (*Iris Kaempferi*) and make a ground-cover planting of lovely pink flowered *Gypsophila Repens*, *Rosy Veil*. There are many ways to use quantities of Regals in your garden and don't make the mistake of thinking because of their ease of growth, they are not desirable. Regals are deservedly the most popular Lily in the world today, truly the Royal Lily.

REGAL-680—No other Lily equals the Regal in characteristics that make a good garden plant. Height 4 to 7 ft. PD 6 inches. June-July. We offer a limited supply of Extra Select Jumbo Bulbs, each \$1.00. Choice large size, each 55c. Medium size 35c. Flowering size 25c. Shipment October to February, but, PLEASE ORDER EARLY.

Special for Mass Planting

REGAL-680—For mass planting. First quality Oregon grown, fresh dug bulbs. Prepaid delivery within the U. S. A. October-December shipping.

	12	25	50	100
Flowering size	\$2.75	\$5.50	\$10.75	\$21.00
Medium size	3.50	7.00	14.00	28.00
Large size	5.50	11.00	22.00	44.00

ST. NICHOLAS-786—Last season was our first offering of this little known hybrid. It is a Martagon-Hanson cross with striking buttercup-yellow blossoms having small black spots. The flower arrangement is pyramidal as with Martagon and altogether delightful. This variety is very rare in this country and Mr. Kline recommends it very highly. Unquestionably these newer hybrid Lilies have a big future as they are exceptionally disease resistant. St. Nicholas flowers in June. Height 3 to 4 ft. Partial shade. PD 5 inches. Stock limited. Flowering bulbs, each \$6.75.

ROEZLII-700—An Oregon-northern California native Martagon of graceful form and striking color. The blooms are golden yellow shading orange-red at the tips of the petals, spotted maroon. It bears six to 12 blooms in early July. Thrives in sun or partial shade and should have plenty of moisture during the growing season with ample drainage. Prefers a lime-free soil. Ht 3 to 5 ft. PD 4 inches. Flowering size bulbs, each 85c, Three \$2.35.

ROEZLII HYBRIDS-708—These are seedlings of the species offered above. Martagon or Turkscap in type, they vary somewhat in form and height. Colors vary in shades of yellow and red, mostly with maroon to purple spots. Similar to the species, they like a moist but well drained location with plenty of humus and seem to prefer partial shade. If you have the right soil conditions for them you will enjoy their lovely blossoms. They dislike lime soils. July. Height 3 to 5 feet. PD 4 inches. Flowering bulbs, each 75c, Three \$2.05.

Don't overlook the Micronized Copper offered on page 39 for the control of that bothersome Lily disease, *Botrytis*.

The Regal Lily

Today's Most Popular Lily

If you have room for but one Lily let it be Regal. If you have room to mass a hundred Lilies, let them be Regals. Maybe you wonder why I suggest this when there are so many fine Lilies. Simply because the Regal gives such complete satisfaction and grows with the least care. Year after year it thrives and blooms, making garden pictures ever so satisfying.

Regal is a Lily to plant in quantity. Their cost is so moderate everyone can afford them and though others may be most intriguing, the beauty of the Regal is surely satisfying. Plant them by the dozen, in masses of 25 or more. Line them out in the cutting garden, your friends will enjoy a half dozen. The bulbs are so cheap you can afford to cut them with long stems even if the bulb does not survive. Leaving half the length of the stem when cutting will generally permit the bulb to live.

Picture Regals banked against an evergreen hedge, their great blossom heads, deliciously fragrant, make an unforgettable show. Against a gray stone wall or lining the garden path, their gracious beauty is ever welcome. Regals have an exotic quality to their beauty equal to that of any other variety, a quality that makes them welcome in most any setting. They enjoy full sun, thrive in light or heavy loam, with or without lime. They start early, so keep them mulched well in cold sections until frost danger is past.

REGALE, Blondie-681—The White Regal Lily. This is white not only on the inside but outside as well. Blooms same time as the usual Regal but is distinctively different. Has every good trait of the species and bids fair to become popular when better known. Culture same as type. Selected Flowering bulbs, each \$1.35.

REGAL BULBLETS

We can supply a limited quantity of nice Regal Lily bulblets which should bloom the second year and grow into fine large bulbs. You can plant a hundred of them in a space three feet square and transplant them a year later into their permanent locations. This is an opportunity to get a lot of garden beauty for a minimum outlay. Plant the bulblets about two inches deep in well prepared soil. Shipped October to February. 50 bulblets for \$2.75, 100 for \$5.00. Special prices on quantities.

HENRYII (Page 17)





A Trio of Garden Aristocrats

Here are three of the world's most beautiful Lilies. Sulphureum, on the left, a truly magnificent Lily from far off Burma, has huge trumpet-shaped flowers up to nine inches in length. This illustration can convey but a suggestion of the real beauty and delicacy of this rare and beautiful Lily. Especially desirable for its late flowering after most others are through. Not available this year.

In the center, *Speciosum rubrum*, one of the greatest favorites for border planting, almost orchid-like in effect.

At the right, the beloved *Auratum*, one of the noblest of the genus *Lilium*. Recent developments in growing this Lily here in the Northwest brings you forms, types and colors more beautiful than ever. See page 4.

The Speciosum Group

Unquestionably these are among the handsomest of all Lilies, ranking with *Regale*, *Auratum* and *Candidum* in this respect, and deservedly, one of the greatest favorites for border planting. The gracefully waved, frilly petals are rolled back, recurved and twisted, spotted and blotched with delicate color. Prominent papillae add contrast and the conspicuous anthers, delicately poised, lend charm to the symphony of color.

Speciosum Lilies are not too particular as to soil but do best in a well drained loam with plenty of humus and full sun or partial shade. They are easily the highlight of the late summer garden, the more so because of their comparatively easy culture. Ht 3½ to 4½ ft. PD 6 in.

SPECIOSUM Rubrum—780—The most widely grown and best known of the group. White flowers flushed and spotted with deep rose, producing a bloom essentially carmine-pink. Delightful with *Anemone Hupehensis*, *Heliotrope* and blue *Hosta*. Combine it with *L. Auratum* and *Longiflorum Estate* against an evergreen background and flanked with *Abelia Grandiflora*. We have a few extra select bulbs, each \$1.75. Choice flowering bulbs, each \$1.35, Three for \$3.75. All Oregon grown, freshly dug stock.

SPECIOSUM Album—776—A lovely, snow-white flower with a golden green stripe through each petal and anthers of a coppery tint. Both in form of the flower and habit of growth, this Lily is one of the most beautiful of all. Selected flowering bulbs, each \$2.10.

SPECIOSUM Oregon Giant—See Page 3.

HENRYI, The Golden Speciosum—386—A very fine Lily from China worthy of admittance to any garden. It blooms just before the true *Speciosums* in August. Slender six to eight foot stems carry from four to twenty or more large, nodding, reflexed, frilly blooms in a soft golden orange-yellow with a green central line along each petal. One of the best border Lilies, vigorous and healthy, seldom failing, truly an invaluable garden plant. Not finicky as to soil but partial to a half shady spot. Mass it against blue *Hydrangeas* or against that charming shrub *Vitex Macrophylla*. This Lily is so like the *Speciosums* that a delightful group may be made by combining the three, *Henryi*, *Speciosum Rubrum* and *Album*. Against an evergreen background they are gorgeous. Group with them the lovely white "Estate Lily" (*Longiflorum Estate*). *Henryi* is a Lily to plant freely in your garden due to its inherent dependability. Excellent for cutting and beautiful also under glass. PD 6 in. We have a few jumbo bulbs, each \$1.10. Selected large bulbs, each 70c. Strong flowering bulbs, each 50c. Three, flowering size \$1.40.

SPECIAL FOR MASS PLANTING

The two *Speciosums* and *Henryi* make a grand display planted in mass. We will send you 10 each of the three varieties, No. 776, 780 and 386, for \$37.50. 5 each \$19.00.

Fresh Dug Bulbs

Lilium Testaceum

TESTACEUM (Syn. Excelsum)-848-The Nankeen Lily, one of the choicest, a real aristocrat. Fragrant blooms are true nankeen-yellow delightfully tinged pale pink with brilliant orange anthers; forming open cluster at top of stem. Effective against dark evergreens with pale blue Delphinium. Due to delicate tones, avoid planting among bright colored flowers. June-July. Full sun best, but tolerates partial shade. Late planting undesirable, September ideal. PD 3 in. Ht 4 to 6 ft. Very scarce. We have a few extra fine large bulbs, \$2.90. Choice select, \$2.25.

SEE
QUANTITY
PRICES
PAGE
19



SUPERBUM-796-This is our native Turk's Cap, a favorite with every gardener and easily one of the finest American plants. The flowers are nodding, Martagon type, strongly reflexed, bright orange suffused yellow with red tips and brown spots. A Lily easily established in moist but well drained lime free soil with plenty of humus. Grows vigorously, 5 to 9 feet tall, with up to 40 flowers on a stalk. A versatile Lily equally at home in the border, shrubby or wild garden. Prefers partial shade and plenty of moisture. Try a group of them rising among tall feathery spires of white Cimicifuga Racemosa against a dark background and the ever valuable Aster Frikarti massed in the foreground. July-August. PD 5 in. Flowering size bulbs, each 45c, Three for \$1.25.

SCOTTIAE Light Form-760-A hybrid produced by Mr. F. L. Skinner, Manitoba, Canada. The blooms are ideally held, facing outward, a bright salmon-orange, spotted purple. As a Lily for the flower border it is of easy culture and vigorous growth. Ht 2 to 3 ft. Use purple violas for ground cover planting and you'll have a delightful picture. July-August. PD 5 in. Choice flowering bulbs, each \$1.10.

SCOTTIAE Dark Form-764-Same as above but darker and earlier blooming. Choice flowering bulbs, each \$1.15.

SARGENTIAE-756-A truly magnificent August-flowering trumpet Lily reddish-brown outside, creamy-white inside with a lovely golden-yellow throat. Anthers are deep brown, contrasting beautifully with the yellow throat. This Lily has been very scarce and we can supply but a very few bulbs this year. Ht to 7 feet. PD 6 in. Selected flowering size bulbs, each \$2.25.



SULPHUR Hybrids-793-This group was offered last season as Crow's Hybrids, Yellow Forms, but the originator feels that Sulphur Hybrids better describe them. Colors pale-yellow to sulphur-yellow, a most desirable development in trumpet Lilies. Doubtless the Sulphureum blood has given them added charm. Their late flowering and vigorous, healthy growth without any pampering make them extremely valuable. Height 4 to 6 ft. PD 6 inches. Stock limited. Flowering size bulbs, each \$3.25.

SKYROCKET-770-This is the first offering of this new hybrid and we anticipate it will find great favor when better known. The medium size blooms are pendulous and a glowing vermilion-red, dotted with black, a stunning Lily and worthy of a prominent location in your garden. Try it against a white flowering shrub and use plenty of blue flowering plants in the foreground. Ht 4 to 6 ft. PD 5 in. Choice flowering bulbs, each \$2.75.

LILIUM
SCOTTIAE

TENUIFOLIUM-830-The gayest of the "little Lilies". Miss Clark called them a bright "cheery" red, bringing into our gardens joy and gladness in late May and early June. The slender wiry stems have an air of delicacy and refinement, holding aloft their numerous dainty Turks Cap blooms of bright scarlet. Either in the front of the border or in the rock garden, its dwarf stature is ideal. Try them among a large mass of Anchusa Myosotidiflora. You will be astonished how the scarlet of the Lily livens up the lovely forget-me-not blue of the Anchusa. This Lily is reasonable enough to plant liberally and charmingly beautiful as well. PD 3 in. Ht 1½ ft. We have a limited supply of selected large bulbs, each 40c. Smaller, good flowering bulbs, each 25c, Six for \$1.40.

TENUIFOLIUM Golden Gleam-834-Identical to the above except in color which is a delightful golden apricot yellow. Try it among large drifts of rich purple pansies. You'll love it. Choice flowering bulbs, each 55c, Three \$1.55.

TENUIFOLIUM Yellow Bunting-840-This was new last year, in size and type similar to the Species from far off Russia. Blooms a light canary-yellow, a lovely graceful flower you will adore in the garden. Valuable for its extremely early flowering. Height 1½ feet. PD 3 in. Stock still very scarce. Flowering bulbs, each \$3.00.

Special No. 3

EARLY TO LATE LILIES

This popular collection with a few changes is again offered. Varieties flowering from May to September. All are easy kinds thriving in average situations.

Tenuifolium	Superbum	Henryi
Concolor	Maxwill	Speciosum Rubrum
Candidum	Maximowiczii	Formosanum (late)

One bulb each of above nine kinds and five Regal, 14 bulbs in all, each one labeled, flowering size, \$5.00 postpaid.

STAR OF OREGON-785-A hybrid of Humboldtii x pardalinum. It produces 14 to 20 Martagon type blooms on vigorous stems six to seven feet tall. Color is cadmium orange, spotted black in the throat with spots enlarging with red zones outward. Strikingly brilliant Lily. July flowering. PD 6 inches. Flowering size bulbs, each \$1.35.

WASHINGTONIANUM Purpureum-880-Our beloved Mt. Hood Lily. The Purpureum variety is considered best for gardens and is the only one we offer. Stock is all nursery grown and fully matured. This beautiful native Lily carries up to 30 funnel shaped blooms opening white with purple dots in the throat. As the flowers age they become lilac purple. Fragrant. Plant in a loose gravelly soil with plenty of leafmold and PERFECT drainage. Prefers partial shade. Generally requires a year after planting to establish itself. PD 5 in. Ht 3 to 6 ft. June-July. Extra select bulbs, each \$1.50.

Grown in Oregon

Selected Hybrids of T. A. Havemeyer

Produced by Mr. Edgar L. Kline

Unquestionably the most sensational group of new hybrids introduced in many years. Stunning colors include saffron, tangerine, Egyptian buff, persimmon orange, majolica yellow and myriads of in-between tones. These unusual symphonies of color combined with unique ruffled, fluted petals and a hardy, disease resistant constitution, put this lot of hybrids in a class by themselves. Their ease of culture, tolerance of sun or partial shade, adaptability to average soils and robust growth augurs ever increasing popularity.

These are all seedlings of L. T. A. Havemeyer, a hybrid of L. Myriophyllum (Sulphureum) and L. Henryi. Both for garden and cutting they are hard to beat. The following six have been selected and named as outstanding representatives of the strain. August-September. PD 6 in. Any of the six, choice flowering bulbs, each \$15.00.

PAULINA KLINE-810-Majolica-yellow shading to saffron, flecked at base of petals with oxblood-red—back of petals lettuce green. Flowers 5½ inches (expanded 8 in.) Ht. 6 ft.

MABEL B. RONNA-812-Majolica-yellow, stained lemon-yellow, flecking oxblood-red. 5 in. flower. Very erect. Ht. 8 ft.

WILLIAM BATES-814-Light tangerine orange shading to ivory. Flower 5 inches fully open, slightly recurved. Ht 5 ft.

G. V. SHAW-816-Very favorably mentioned and illustrated in the November '45 Flower Grower. A delicate shade of Egyptian buff shading to old ivory. Anthers a contrasting brown and very prominent, giving the flower a most distinctive appearance.

EDMUND L. KAGY-818-A stunning erect six foot beauty, persimmon-orange, lightly flecked oxblood-red. 8 inch blooms, recurved tips. Exquisite, very erect.

IDA JANE CALIFF-820-A dainty medium size bloom on a three foot stem. Majolica-yellow with border spotted red half way to the tips. Recurved.

Havemeyer Mixed Seedlings

T. A. HAVEMEYER Mixed Seedlings-804-A collection of seedlings of the same parentage as the above named varieties but with slight variations. They were not sufficiently different from those selected to warrant naming but after all inferior types were thrown out, these proved worthy to be propagated. Sold as a mixture, they are easily worth several times the price. Color range, descriptions and culture same as the named varieties. We feel this strain has a tremendous future when its merits are known. A planting of them will produce numerous truly enchanting flowers with considerable variation in colors. I offer them with confidence that you will find the blossoms even more lovely than anticipated. Choice flowering bulbs, each \$1.95. Three for \$5.35.

L. WASHINGTONIANUM—THE MT. HOOD LILY (Page 18)



Quantity Prices

Here are the prices for **three** and **twelve** bulbs of one kind, according to the **each** price. To know the quantity prices on any variety, look at the each price and this tabulation gives the price for three or a dozen of **ONE kind**. We will supply 25 for the price of two dozen, 50 at the price of four dozen and 100 for eight times the dozen price. For example, **Regals** at **25c** are **three** for **70c**, **twelve** for **\$2.75**, **twenty-five** for **\$5.50**, **fifty** for **\$11.00**, and **one hundred** for **\$22.00**.

Each	Three	Doz.	Each	Three	Doz.
\$.25	\$.70	\$2.75	\$.75	\$2.10	\$ 8.25
.35	1.00	3.85	.85	2.35	9.35
.40	1.10	4.40	.95	2.65	10.45
.45	1.25	4.95	1.00	2.80	11.00
.50	1.40	5.50	1.10	3.05	12.10
.60	1.65	6.60	1.15	3.20	12.65
.65	1.80	7.15	1.25	3.45	13.75
.70	1.95	7.70	1.35	3.75	14.85

BULB SIZES

We wonder if you realize the great variation in size of the different varieties of bulbs. A flowering size Regal is a bit smaller than a hen's egg but a fully grown Duchartrei is not as large as an ordinary marble. A great many flowering size bulbs are no larger than a robin's egg. Every bulb we send out either has flowered in our fields or is of a size that should flower the first year.

Lilies for Forcing

Auratum	Longifolium varieties
Candidum	Nepalense
Concolor	Ochraceum
Croceum	Princeps Hybrids
Crow's Hybrids	Regale
Dauricum varieties	Sulphureum
Elegans varieties	Speciosum varieties
Formosanum, early	Tenuifolium varieties
Formosanum, late	Testaceum
Hansoni	Umbellatum varieties
Henryi	Willmottiae

This list is not exhaustive but includes those most often and successfully grown in pots.

See page 11 for directions on growing Lilies indoors.

Special No. 4

LILIES FOR CUTTING OR MASSING

This is a very special value you'll appreciate. Fifty or a hundred or more of these fine lilies will give you mass effects for months or you can cut scores of lovely bouquets. When cutting, leave half the length of the stem to mature the bulbs and you will have good blooms year after year.

Candidum	Formosanum-Late
Davidi Improved	Regal
	Maximowiczii-Late

Ten bulbs of each, 50 bulbs, labeled, postpaid, \$17.00
 Twenty of each, 100 bulbs, labeled, postpaid, \$33.00
 All bulbs flowering size.
 Shipped in two lots as they mature.

The Umbellatum Lilies

These consist of numerous varieties with vigorous, showy, upright flowers related to Elegans and Croceum. They are a healthy, satisfactory lot 1 to 4 feet tall with a wide range of color and of the easiest culture, thriving in average garden soil, sun or partial shade. Umbellatums are ideal Lilies for the hardy border. They mass well between Iris and Peonies and hold their own in close proximity to most perennials and dwarf shrubs. Fine also for pot culture in cool greenhouse. June-July. PD 4 in.

UMBELLATUM Chief Chinook-854-This outstanding Lily was first offered by Mr. Kline in 1941 and is today unquestionably one of the finest of the group. The upright flowers of "Chief Chinook" measure 5½ to 6 inches across and are carried on stout stems 2½ to 4 feet tall with 15 to 20 flowers on a stem. The color is apricot at the base shading to capsicum red at the tips with a few dark mahogany spots. Like most of the Umbellatums it is highly disease resistant and of the easiest culture in either sun or partial shade. Try it with dark blue Baptisia and lemon yellow Hemerocallis against a background of Pacific Hybrid Delphinium. Choice flowering bulbs, each 80c, Three for \$2.25.

UMBELLATUM Erectum-856-Applegates Var. A large flowered strain erect in habit with bright reddish-orange blooms that make a grand display in the border. It flowers later than most of the others. Ht 1½ to 2 ft. Choice flowering bulbs, each 65c.

UMBELLATUM Golden Fleece-858-A very large bloom of a clear golden yellow with petals tipped scarlet. One of the most handsome of the group. Good pot plant in the cool greenhouse. Stock limited. Ht 2 to 2½ ft. Flowering size bulbs, each \$1.20.

UMBELLATUM Vermilion Brilliant-860-A crimson-blood-red, one of the showiest of the lot. Petals are broad, sparsely spotted black. This is a stunning variety and we are glad to offer it again. Choice flowering bulbs, each 55c.

UMBELLATUM Incomparable-864-A rich crimson, the best of the medium reds. A vigorous showy Lily for the hardy border. Ht 2 to 3 ft. Selected flowering bulbs, each 55c.

UMBELLATUM Orange Triumph-862-A large vigorous Lily, glowing orange. Ht 2 to 2½ ft. Flowering bulbs each \$1.15.

UMBELLATUM Mixed-868-Contains the full color range of the strain and all heights. June to July. PD 4 in. Flowering bulbs, each 55c, Three \$1.55, Dozen \$6.05.

Planting and Care of Lilies

To completely cover this subject would require a volume of many pages so I'll try to cover the essentials and for those who desire more complete information, refer them to the book by my good friend, Mr. George Slate, described on page 10.

In the description of each variety I have tried to give the correct planting depth and requirements as to sun or shade. These should be followed carefully. Depths should be varied as much as 25% in very heavy or very light soils. That is 4 inches in average soils would be five in light soil and only three in heavy. Using judgment in this respect will pay well.

Good drainage is vital. Practically no Lilies will thrive in wet soggy soils. If yours is heavy and poorly drained, excavate two to three feet deep, fill bottom six to twelve inches with gravel, crushed rock or similar material that water may drain readily. Then lighten the soil by adding a third to a half by bulk of sharp sand and peat moss or leafmold. Old compost is valuable also. Good soil for Lilies has been described as "frothy," a most apt description. It should be loose and very friable. In soil the least bit heavy, plant in a little pocket of sand, above, around and beneath the bulb. "Frothy" soil allows air to penetrate, this aids bacterial action, a factor highly important to soil fertility.

The best fertilizer is bone meal and potash—wood ashes are fine when mixed with the soil. Avoid ordinary commercial fertilizers as they are inclined to burn the roots. Good compost is excellent. Leaf-mold soils are the natural habitat of many Lilies.

Plant your Lilies as soon as they arrive. They resent being kept out of the ground a moment longer than necessary. We ship our Lilies as soon as dug for this reason rather than hold the early ones until the later maturing varieties are ready. This means thousands of extra packages mailed but we feel it worth the trouble.

Spring planting is not recommended as we do not carry bulbs over in storage. The late maturing varieties can be planted any time before the ground freezes. If a cold spell comes before the late maturing varieties are ready, prepare the soil ahead and mulch it heavily so that it will not freeze. Freezing solid the day after planting will not harm any of the hardy varieties and this applies to all except those specifically listed as tender. Dry leaves, straw or peat moss or even evergreen boughs can be used as a mulch to forestall freezing.

A new mulch is now available called vermiculite, a home insulating mineral product, available from building material dealers. It is probably the best of all. In addition to mulching, it has many other uses in the gardening field which can not be mentioned here. We will hear lots about this new product in the future.

All stem rooting Lilies, and this includes most every one we plant five inches deep or deeper, should have the soil replaced to a depth of four inches in an area eighteen inches in diameter each spring. The new soil you use to replace that which served the bulb the previous year should be enriched with thoroughly rotted manure or compost that it may feed the new stem roots which grow above the bulb and are so important to its growth and blooming. The time to replace this upper four inches of soil is just as soon as the stem breaks through the surface in the spring.

Cultivate around Lilies with extreme care as their roots are close to the surface. Better that the surface should be mulched to prevent weeds becoming established and to keep the surface cool and moist. The above mentioned vermiculite is ideal for this. The mulch, about two inches thick, can be applied early in the spring and left on throughout the season. Vermiculite is good protection from early frost damage.



UMBELLATUM Golden Fleece-858-A ve golden yellow with petals tipped scarlet. some of the group. Good pot plant in th limited. Ht 2 to 2½ ft. Flowering size t

UMBELLATUM Vermilion Brilliant -860- of the showiest of the lot. Petals are bro. This is a stunning variety and we are glac flowering bulbs, each 55c.

Plan

To completely cover this subject would pages so I'll try to cover the essentials and complete information, refer them to the b George Slate, described on page 10.

In the description of each variety I have planting depth and requirements as to st be followed carefully. Depths should be v very heavy or very light soils. That is 4 in be five in light soil and only three in heat respect will pay well.

Good drainage is vital. Practically no Lili soils. If yours is heavy and poorly drain feet deep, fill bottom six to twelve inches or similar material that water may drain soil by adding a third to a half by bulk of or leafmold. Old compost is valuable als been described as "frothy," a most apt loose and very friable. In soil the least t pocket of sand, above, around and benea allows air to penetrate, this aids bacterial portant to soil fertility.

The best fertilizer is bone meal and pot when mixed with the soil. Avoid ordinar they are inclined to burn the roots. Good c mold soils are the natural habitat of man

Plant your Lilies as soon as they arrive. T of the ground a moment longer than nec as soon as dug for this reason rather thar the later maturing varieties are ready. Thi packages mailed but we feel it worth the

Oregon is no farther than your Mail Box . . .

PLEASE READ THIS PAGE BEFORE COMPLETING YOUR ORDER

Miss Clark built this business over a period of nearly two decades by selling only the finest quality of bulbs, carefully packing and sending them as soon as matured and selling at the lowest possible prices commensurate with quality and costs of production. The response of her customers as we took over last year has been most gratifying. We shall ever strive to deserve your continuing patronage.

However, you, our customers, can help us render the best possible service by sending your orders EARLY.

Shipping Dates

Stocks of many bulbs are short. Orders are filed in rotation as received and shipped accordingly. Digging starts in August and continues into late November. Most orders are shipped in several lots as soon as dug. Prepare your ground before the bulbs arrive and get them in as soon as possible.

We Pay the Postage

On all orders of \$5.00 or more within the U. S. we pay the postage unless otherwise stated. On orders sent out of this country please add 10% to cover postage and extra handling. For orders less than \$5.00, kindly add 50c for postage and handling.

Small Orders

Due to the high cost of handling, please do not send orders for less than \$2.00. Seeds are an exception to this. All seeds sent postpaid.

Correspondence

During the packing season from mid-August until early December it is almost impossible to enter into lengthy correspondence. Personally, I average about fifteen hours daily in the packing room, seven days a week. Letters have to wait until orders are taken care of. We have tried to answer your possible questions in this catalog. If you must have further information, write your questions on separate sheets of paper so they can be answered "Yes" or "No", and we'll try to send them back to you at once. Please send self-addressed envelopes to avoid errors. We want to help all we can but in these days when adequate help is almost unobtainable, there is a limit to physical ability. You can help us to help you by noting the above.

Please Print or Write Your Orders Plainly — PRINT Name and Address ALWAYS

Use Separate Sheet of Paper for Correspondence

Romaine B. Ware - Lilies

Remittances

Your remittance and order will be acknowledged when received. Money orders, checks or bank drafts may be used. Avoid sending currency which is at your own risk. No C. O. D. shipments. Retail only.

Guarantee

We guarantee all bulbs and plants to be in first class condition when sent and to reach you safe and undamaged. Replacement is guaranteed upon any bulbs or plants received in damaged condition. Of course, you would not expect us to replace stock lost due to bad drainage, drought, carelessness, neglect or lack of experience on your part. These conditions are beyond our control and we assume no responsibility. No complaints can be considered more than thirty days after shipment.



LILIUM TENUIFOLIUM (Page 18)

Special No. 5

\$5.00 Items

Any one of the following five items for \$5.00. Any three for \$13.50.

- 23 Regal Bulbs (Flowering)
 - 20 Species Tulip Clusiana
 - 21 Tulip Red Emperor
 - 100 Regal Bulblets
 - 36 Narcissus Seedlings
- Mailed Postpaid.

AMARYLLIS---I560

Mammoth Hybrids

So many customers have asked about the Mammoth Hybrid Amaryllis Miss Clark used to offer, that we have arranged to continue the offer. These bulbs are all Oregon grown with roots intact. They come in mixed colors only and can be had at most any time of the year. The bulbs produce huge blooms well over 8 inches in diameter. We have a limited stock of extra size bulbs at, each \$1.35. Medium size, 80c each.

How about Amaryllis as a gift for that friend who likes to grow flowers in the house?

Special No. 6—HEMEROCALLIS

One root each of five varieties of Hemerocallis (our selection) including the famous Hyperion, postpaid \$2.50. See page 27 for other varieties of this outstanding perennial.



TIGRIDIA

TIGRIDIA---Tiger Flower

Aptly called "Captive spirits of the Aztec sun-dancers". One of the most brilliant, long flowering bulbous plants for the late summer garden. Available both in separate colors and a stunning mixture. We are happy to offer you large bulbs which should give a gorgeous display from August till frost. Same culture as Glads. Spring shipment.

White-1550-Delightfully airy blooms, lily-like in form, brilliantly spotted.

Yellow-1552-Very rich yellow.

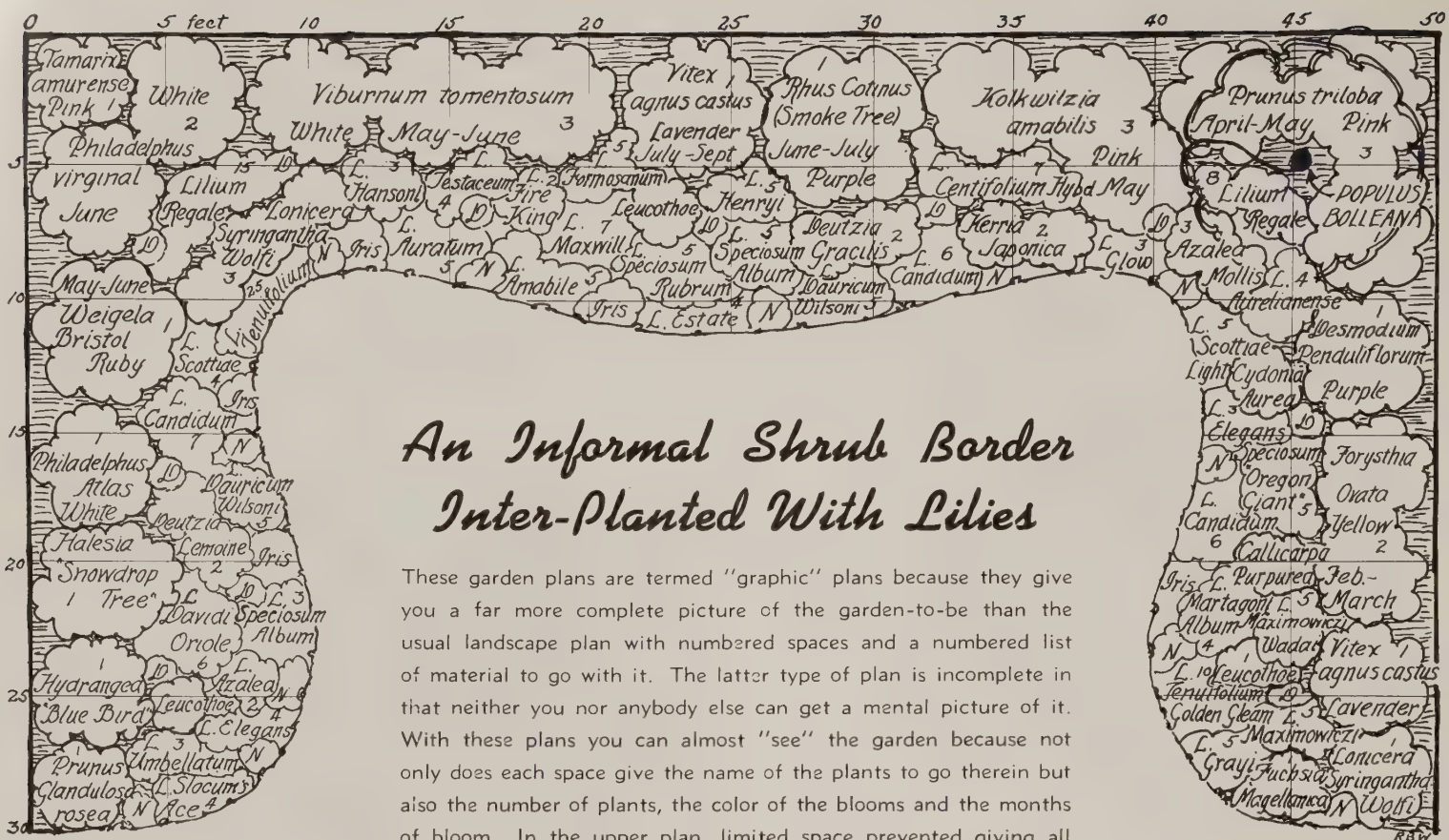
Rose-1554-A lovely color without purple tone.

Mixed-1558-A mixture of seven colors, a gorgeous show. Any of the above (order by color and number). 6 for 85c, Dozen \$1.65, 100 for \$12.50. Postpaid.

No order for less than six of a kind.



HEMEROCALLIS
(Page 27)



An Informal Shrub Border Inter-Planted With Lilies

These garden plans are termed "graphic" plans because they give you a far more complete picture of the garden-to-be than the usual landscape plan with numbered spaces and a numbered list of material to go with it. The latter type of plan is incomplete in that neither you nor anybody else can get a mental picture of it. With these plans you can almost "see" the garden because not only does each space give the name of the plants to go therein but also the number of plants, the color of the blooms and the months of bloom. In the upper plan, limited space prevented giving all this data except for the shrubs but it does give you a graphic idea as to the arrangement and the associating of the different plants with each other.

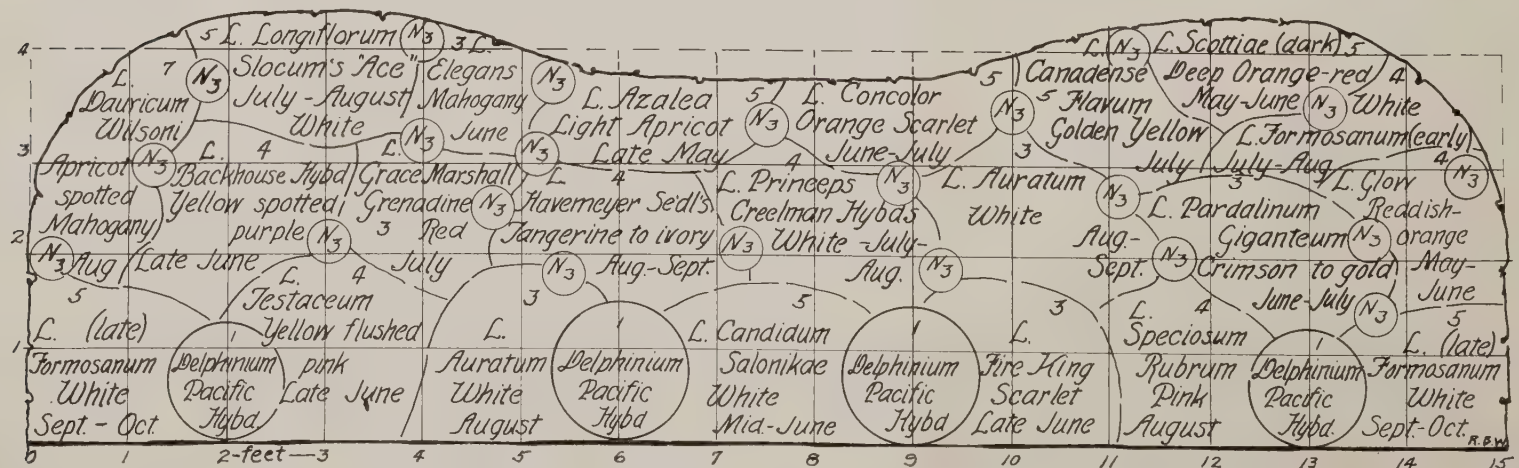
Border Above --

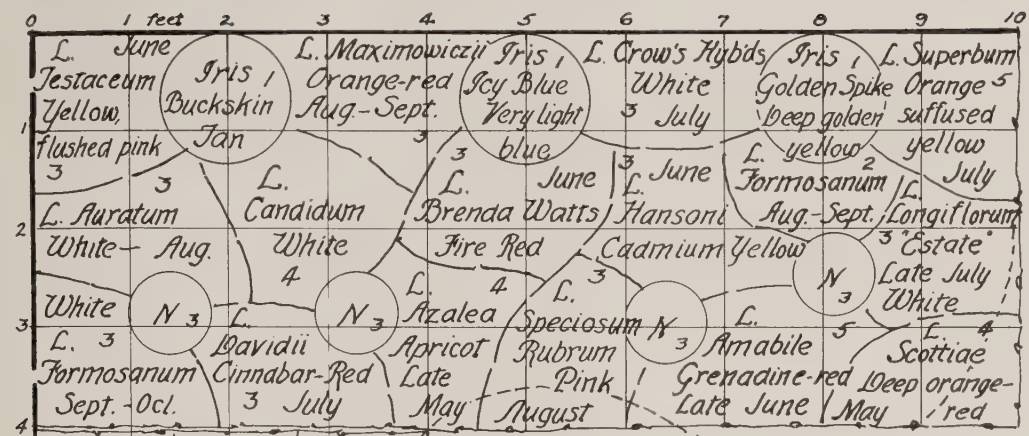
The border at the top of the page is planned for a space fifty feet across the back with the end pieces extending forward thirty feet. The width at the widest place, in the middle of the back, is about eleven feet. Note the entire border plan is ruled by fine lines into squares five feet each way. This helps you to judge the area each lot of plants will occupy. It would be a great help if you were laying it out in the garden for planting. The small spaces with an N in them suggest a clump of Narcissus for early spring color and those with a D suggest Delphinium. The figures given in the different spaces indicate the number of plants or bulbs suggested for approximately the area outlined.

Border Below --

This border could, of course, have a lot of additional material, both as companion planting and ground cover among the Lilies and also a host of spring bulbs. (See next page for suggested companion planting.) Many of the "Little Cousins" offered on pages 34 and 35 would add greatly to the interest of the border.

A great many annuals could be planted among the Lilies to provide bloom when the Lilies are past. The secret of any successful border is to as nearly as possible have a reasonable mass of color throughout practically its entire area all through the season. This takes a lot of planning and planting. You may never get your entire border to suit you but you will have a lot of joy working at it and what more can you ask of a garden?





NOTE—Please note how these unit plans can have either a formal straight line at the front edge or a curved informal line. A very slight juggling of the plants can be made to accomplish this. It might be noted also that the unit five by ten feet will just as well make a border six feet wide by eight feet long or one four feet by twelve feet.

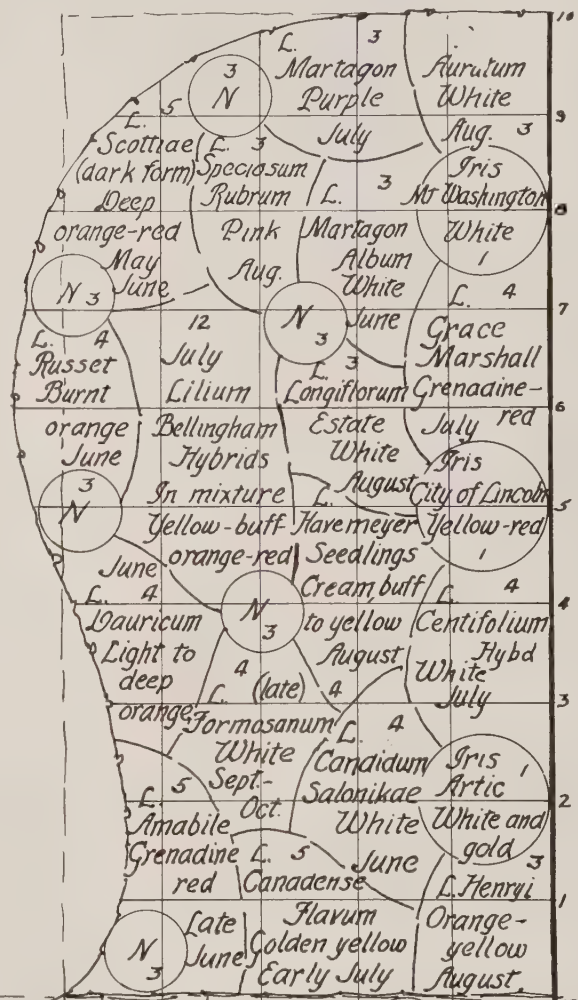
On this page there are four unit garden plots, two five by ten and two four by ten. They could be combined into one long border by juggling the four by ten into five by eight and putting them end to end. This would make a border five by thirty-six. Better still would be to spread the border out to a width of seven feet to allow for additional companion planting and produce a more complete garden.



Graphic Plan for Lily Borders

Lily Gardens are specialized gardens in that they are devoted primarily to Lilies. Too they are specialized in that they must have special preparation. The soil **MUST** be right, the drainage **MUST** be perfect and all harsh plant foods must be avoided. The right soil will have an abundance of leafmold or peat moss in it to a depth of twelve inches and plenty of sand to insure perfect drainage. These are **MUSTS** if you want the Lilies to thrive.

Next the companion plants should be carefully chosen. In the plans given here, limited space prevented including the ground cover plants that are so important among Lilies. Below are listed just a few of the many plants suitable for interplanting to provide shade to the soil around your Lilies. Properly planted, the soil around your Lilies will be shaded at all times and will need little if any cultivation. Pull out any weeds that intrude rather than cultivating them out. Lily roots are close to the surface and even careful cultivation can not avoid injury.

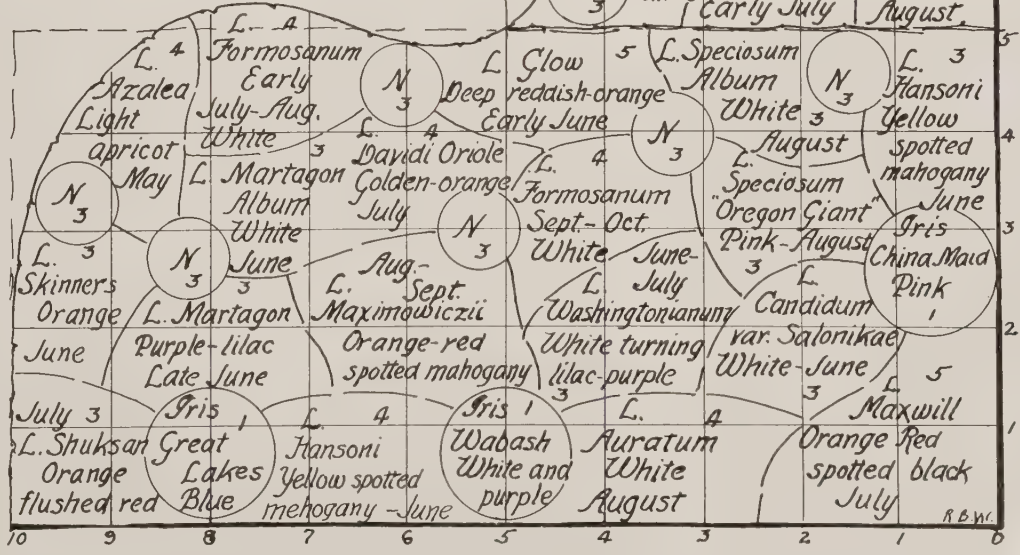


Companion Plants

If you have studied lilies in their native haunts, you have found them growing among masses of other plant material which completely shielded the surface of the soil. This applies to both sun loving varieties and those demanding shade.

Try pansies, columbines, flax, anchusa, lupine, blue hosta, heuchera, violas, ferns, Chinese delphinium, lavender, Scotch pinks, sedum spectabile and others.

Dwarf spreading evergreens make fine ground covers as do also low growing rhododendrons and azaleas. Both the latter, like Lilies should **NOT** be cultivated as their roots are right at the surface. Most of the low growing sprawling deciduous shrubs are good also as they not only do a good job of shading but make fine masses of foliage against which the beauties of the Lily blooms show off well.



DAFFODILS

*And narcissi, the fairest of them all,
Who gaze on their eyes in the stream's recess,
Till they die of their own dear loveliness.*
—Shelly

Every real gardener loves daffodils but how few have been privileged to enjoy some of the newer gems in their gardens. Have you seen the pure white five-inch blooms of Beersheba, the famous pink Backhouse or the striking Hades with its creamy-white petals and cherry-red cup? Has the giant Fortune graced your garden or the extra early February Gold? Has dainty, charming Angels Tears (*Triandus albus*) caused your flower friends to turn green with envy? These and many others may well make your garden the show place of your neighborhood now that they are so low in cost.

Why not plan now for some garden thrills next spring? Prices are lower than they have been for years but early ordering is wise. Many will be sold out by planting time.



BULBOCODIUM CONSPICUUS



FEBRUARY GOLD

BEERSHEBA—N27—A forerunner of a new race. Truly magnificent, all white, huge 5 inch bloom. The flat perianth and long beautifully flanged trumpet, its remarkable keeping, fine form and exceptional substance, makes it a perfect show flower. Vigorous, increases very rapidly and does extra well in cold climates. Winner of numerous impressive awards. Each 50c, Three \$1.25.

HADES—N41—A rather late incomparabilis with a deep "cherry-red" cup, beautifully shown against the wonderful creamy-white petals. A strong, vigorous variety of great substance. Striking. Each \$1.00, Three for \$2.75.

ACTAEA—N25—Largest poeticus in existence. Broad snow-white perianth of great substance and good form. Very large eye broadly margined dark red. Considered the most beautiful Poeticus and a gorgeous show flower. Late. Each 20c, \$2.00 Doz.

THALIA—N54—An unusually exquisite flower, not large but delightfully different. Two or three lovely 2-inch blooms per stem, pure white. Beloved by all who see it, especially suitable for bouquets and corsages. Each 30c, Doz. \$3.00.

THALIA



FORTUNE

FORTUNE—N38—Stiff 24-inch stems hold aloft huge blooms of gorgeous coloring, perianth brilliant yellow, widely expanding crown bold and heavy, glowing coppery red-orange. Extremely early and long lasting. Undoubtedly will be more popular than King Alfred when plentiful. Wonderful show flower. Each 50c, Three for \$1.25.

Miniature Daffodils

We are happy to offer these garden jewels especially suited to rock garden culture. These bulbs are scarce so place orders early.

BULBOCODIUM Conspicuum—N60—The Yellow Hoop Petticoat daffodil, a rich golden yellow, rush-like foliage. Ht 6 inches. Blooms late February into early March; likes a sandy peat soil with fair amount of moisture in spring and but little in summer. No manure. A lovely little jewel for a choice spot. Six for 75c, Doz. \$1.35.

TRIANDRUS Albus—N70—Angels Tears. Dainty and charming little gems, lovely in rock gardens and beautiful as pot-plants. Semi-shade is best and a gritty, well drained soil. A well grown clump of "Angels Tears" will be the envy of your gardening friends. 50c, 3 for \$1.25.

JONQUILLA FLORE PLENO—N58—The old double sweet jonquil of our grandmother's gardens, clusters of rich yellow double blooms in May. 3 for 50c.

JONQUILLA SIMPLEX—N57—The true single sweet jonquil, of light elegant growth with charming clusters of small rich yellow flowers, deliciously scented. May flowering. Three for 50c, Doz. \$1.75.

JUNCIFOLIUS—N60—A true miniature rush-leaved daffodil, charming and delightful either in pots or a choice spot in the rock garden. Rich yellow very dainty flowers 3 to 4 inches tall. Delicately fragrant. Three for 75c, Doz. \$2.75.



TRIANDRUS ALBUS





JOHN EVELYN

JOHN EVELYN-N44-Deservedly an international favorite, 4 to 5 inches across, with a two inch cup, frilled or shirred to the base. Pure white with lemon cup. Strong grower and free flowering. Truly one of the loveliest Daffodils either in the garden or for exhibition. Each 25c, 3 for 70c, Doz. \$2.75.

FEBRUARY GOLD-N36-An extra early golden yellow, trumpet fringed orange. In a sheltered early spot it will be ahead of all the neighbors. Three for 65c, Dozen \$2.00.

MRS. R. O. BACKHOUSE-N48-The famous "Pink Trumpet Daffodil," originally priced \$25 per bulb. A lovely informal perianth of ivory white, slim long trumpet of apricot pink, changing to shell pink at the deeply fringed edge. A Daffodil of extremely delicate beauty but of exceptional substance. Blooms early, long lasting. No lover of beautiful flowers will want to be without this gem. Each 75c, Three \$2.00.

MRS. R. O. BACKHOUSE



"Oregon Grown---Fresh Dug"

GOLDEN PEDESTAL-N42-So perfectly formed it looks almost artificial. Pure golden yellow, medium length cup, entire bloom glistening in the sun as though frosted, a rare effect among Daffodils. A very tall flower, not only outstanding in the garden but a blue ribbon winner at the shows. Each \$1.75, Three for \$4.50.

SILVER STAR-N53-An extra fine Leedsii, very free flowering. A perfect broad petaled, star-shaped perianth, pure cream-white, with fine proportioned, wide mouth trumpet of primrose, changing to cream-white, just a shade deeper than the perianth. A great favorite, very delicate and waxy. Each 25c, Three for 70c, Doz. \$2.50.

TUNIS-N55-One of the most popular of the more recent new daffodils. It is early, very tall, unusual color, with broad waved white perianth and large bold ivory crown with handsome flanged and serrated brim, and a remarkable flush of pale coppery gold at the edge. A true novelty with very long lasting blooms. Stock limited. Each 35c, Three for \$1.00, Doz. \$3.50.

All Narcissus postpaid unless otherwise noted.

MRS. JOHN BODGER-N52-A new white white trumpet, one of the finest. It opens ivory-white becoming pure white. Considered by many to be the most exquisite of the new trumpets. Of medium height and size. A gem for the front of the border or in the rock garden. Sure to be a favorite as it becomes more plentiful. It has been a show winner wherever exhibited. These new white trumpet varieties seem to win the hearts of all who see them. Each \$1.25, Three for \$3.25.

EXTRA SPECIAL!

Daffodil Seedlings

Each spring for more than a decade I've visited one of the world's leading Daffodil hybridizers here in Oregon. From fifty to seventy thousand new seedlings, grown each year, less than fifty are selected for further propagating. Present day standards for new introductions are so extremely high that nothing short of the very unusual is considered. The entire balance is sold as a Special Seedling Mixture. I've arranged to offer a portion of them and feel they are without doubt the grandest opportunity imaginable to secure truly fine varieties at a mere fraction of their real value.

Among them are many new pink Leedsii of indescribable beauty as well as lovely Triandrus hybrids, highly colored Barrii, Incomparabilis and huge Trumpet varieties. They are offered as a mixture at an almost ridiculous price.

Friends for whom I secured some of these bulbs a few years ago tell me they simply clean up at flower shows, taking all the blue ribbons. I'm not surprised as many of these seedlings, all but made the grade to be introduced at \$5 to \$25.00 per bulb.

For naturalizing, mass planting or the cutting garden, nothing could be finer. You may buy them in lots of 50, 100, 250 or more. No orders for less than 50 accepted.

Note—These Seedling Mixture bulbs are sent express collect.



Extra Special Mixed Seedlings

50 bulbs for.....	\$ 7.00
100 bulbs for.....	12.50
250 bulbs for.....	29.00
1000 bulbs for.....	115.00

Shipped Express Collect.

Daffodils for Garden and Exhibition

ADLER-N65-A—A marvelously beautiful flower with broad petals of purest white. Cup chrome-yellow shading to blood-orange at the deeply frilled edge. An outstanding bloom of striking contrast. Each 75c, Three for \$2.00.

BERYL-67—This should be included with the miniatures as it is only eight inches tall. A lovely little hybrid with gracefully drooping flowers, primrose-yellow with a bright orange cup shaded gold. A rare early variety of great charm. Each 75c, Three for \$2.00.

CROESUS-N69—One of the older varieties but still good. Light canary-yellow perianth with a broad fluted cup, rich orange to the base. Makes a grand show in the garden and fine for cutting. Each 20c, Dozen \$2.00.

DAISY SCHAFFER-N71—One of the best of the new Giant Leedsii type. Pure white perianth 4½ inches with a two-inch cup of light canary-yellow. A very graceful flower with long lemon-yellow stigma and styles adding to the harmony of the whole. A flower you will truly enjoy. Each 50c, Three for \$1.25.

GOLDEN PERFECTION-N73-A—Jonquil hybrid producing 2 flowers to a stem, deep citron yellow with a glistening mica sheen similar to Golden Pedestal. Cup of pure gold perfectly proportioned to balance the flower. Truly a beauty! Each 30c, Dozen \$3.00.

ROMAN STAR-N75-A—A rare and scarce variety seldom offered. A truly sensational flower with very wide creamy perianth petals almost completely overlapping. The cup is short, heavily fringed and margined fiery orange-red. A most striking flower. Each \$2.00, Three for \$5.00.

ROXANE-N77-A—A very large all-white trumpet. The creamy-white perianth petals are exceptionally broad and the trumpet large and bell-shaped. A showy flower either in the garden or for exhibition. Each 40c, Three for \$1.00.

TREVITHIAN-N79—An excellent Jonquil hybrid, extremely free-flowering with two or more delightfully sweet scented flowers to each stem. A quality bloom with broad perianth petals of a smooth texture and a shallow crown, the entire flower a pale lemon-yellow. Makes a grand show in the garden. Each 30c, Dozen \$2.75.

TWINK-N81-A—A double daffodil of true charm with alternating petals soft primrose and clear orange, making an attractive flower especially delightful for decorative arrangements. It is free flowering, early and a splendid show flower, so "different" it always attracts a lot of attention. Plant it by the dozen for cutting. Each 25c, Dozen \$2.50.

LADY HILLINGDON-N43-A—A deep buttercup yellow Jonquilla Hybrid loved by every beholder. Excellent for cutting or garden. The cluster-type blooms are tall with broad petals. The trumpet, deeply frilled and recurved. All in all, an exquisite bloom, pleasingly fragrant. Each 20c, Doz. \$2.00.

FRANCISCO DRAKE-N39-A—A fitting companion to Dick Wellband, a rare and unusual beauty. Perianth silvery-white, gold tinted at base; cup wide and deep, golden-yellow at base, blending to flame-orange at densely frilled edge. Very tall with blooms far above foliage. Each 25c, Doz. \$2.50.

CARLTON-N29-A—A clear, bright yellow without a trace of orange. Gigantic, perfectly formed. Mere words fail to convey how "different" it is. Only when seen will you agree, no other quite compares to it. A huge crown, rather short, crinkled at brim. Vigorous. Each 30c, Doz. \$2.50.

MARY COPELAND-N50—One of the now famous new semi-double type. This variety has been termed the most striking double in cultivation. The longer petals are pure cream-white with gold ray down the centers, interspersed with shorter petals of lemon and brilliant orange, giving a three color effect; unsurpassed for garden and show bench. Each 40c, 3 for \$1.00.

MOUNT ROYAL-N46-A—A magnificent wide spreading deep yellow trumpet daffodil, with perianth having three base petals extra wide, the three inner being narrower and more curved. Blooms after King Alfred and is even larger than that famous variety. Each 75c, 3 for \$2.00.

DICK WELLBAND-N37—One of the finest, very strong grower, exceptionally free blooming. Perianth pure white, cup the brightest flame-orange that does not fade but intensifies with age. Unusually long lasting bloom. The startling contrast of petals and cup, makes it outstanding in any collection. A marvelous exhibition favorite. Each 40c, 3 for \$1.00.

RED SHADOW-N47—Very late, one of the last of all, with much of the color found in Fortune. A bold, attractive flower, perianth creamy-yellow, very large cup, deep-yellow, margined red-orange. Good increaser, free flowering. Excellent exhibition flower. Each 30c, Doz. \$2.50.

ROYAL SOVEREIGN-49—Most graceful of all the semi-doubles and the most charming, if not the most striking in the coloring; creamy-white petals interspersed with crinkled and frilled trumpet petals, primrose-yellow shading to pale primrose as the flower develops. On of our favorites, a daffodil appealing to every flower lover's fancy. Each 60c, 3 for \$1.50.

Please Note—No orders accepted for Daffodils after October 1st BUT don't wait to place your order as many varieties are all sold by the 1st of September. Bulbs will be very scarce.

Choice Camellias

The happy response to our initial offering of these magnificent shrubs was much appreciated. The varieties are the finest grown. Each one has been chosen as the outstanding variety in its class. We have doubled the number of kinds in our listing but their quality standards have been kept at the very top. All plants are grafted on three year roots and should make rapid growth. Prices are quoted for 15 to 24 inch plants, postpaid. Some few are in bud but all should bloom the second year. They are top quality, vigorous stock, healthy and carefully packed.

APPLEBLOSSOM-1501—This is a new variety, a single white tinged with pink, a lovely thing, deliciously fragrant. Very free blooming. Each \$12.50.

ARAJISHU-1502-A—A true deep red, fully double peony or carnation form. A good grower and vigorous with numerous blooms. Each \$7.00.

DEBUTANTE-1507-A—A pink you will love, an early bloomer, peony type. An exquisite shade of pink. Rare. Each \$11.00.

ECSTASY-1500-A—A very lovely clear pink with four inch blooms. Fast growing and free flowering. Each \$8.00.

FIMBRIATA SUPERBA-1508-A—A frilled begonia type with edges of petals serrated. Crimson red of medium size. Experts list these fimbriatas as among the finest. Fully double and perfect in form. A new and rare variety. Each \$14.50.

FIMBRIATA SUPERBA ALBA-1509—The white form of the above and just as fine. Each \$14.50.

GLORY DE NANTHES-1512-A—A large semi-double in scarlet red with bright golden stamens. One of the best and very lovely. Each \$10.00.

GRANDE FLORA ROSEA-1518—An extremely large single to semi-double with golden stamens and petaloides in the center of the salmonish-pink bloom. A very fine variety. Each \$11.50.

KUMASAKU-1519-A—A large fully double bloom, salmon pink and very free blooming. Each \$8.00.

LOTUS-1521—One of the very largest flowers, six inches or over. Pure white with golden stamens. An exquisite variety. Each \$14.00.

MRS. WILLIAM THOMPSON-1525-A—A very large, semi-double, white with a faint blush and golden stamens. Lovely and rare. Each \$11.00.

PURITY-1530-A—A lovely double white with a few golden stamens when fully opened. The blooms are medium size, perfect form. Each \$5.00.

STARDUST-1533-A—A pink peony type with four inch blooms. Exceptionally good foliage. Very free flowering. Each \$8.50.

WHITE WAUKANURA-1534-A—A very new and rare pure white, semi-double with long yellow stamens. A distinctly different variety and very lovely. Each \$13.50.

WINTER GLORY-1535-A—A new carmine-red, semi-double and one of the loveliest of all. Five to six inch blooms and very free flowering. This is very rare and new. Each \$17.00.

VICTOR EMANUEL-1536-A—A huge deep red, peony form. Rare and late blooming. Each \$15.00.

All Camellias are shipped prepaid late in October.

Matilija Poppy

"ja" pronounced "ha"

A gorgeous plant in full bloom. A western American native perennial with a profusion of big five inch crinkly crepe-paper-like blooms, pure glistening white with prominent golden-orange centers. Established plants send up three to a dozen six to eight foot stems with silvery or light bluish-green foliage. Dies down in the fall and should be cut off at the ground. Starts early in the spring, growing rapidly.

It will thrive in the hottest, driest, poorest soil you have and needs no special summer irrigation after clumps are once established. Demands good drainage. Few if any pests or diseases bother it. Hardy to ten above zero and with plenty of protection will thrive most anywhere. Plant in the fall only and avoid disturbing in the spring.

Matilija makes a striking cut flower and lasts well in water. Cut just after flowers open. Blooms profusely in early summer with scattered blossoms till frost.



MATILIJA POPPY

MATILIJA POPPY-1475

Single plants, postpaid \$2.00.

Three plants, postpaid \$5.00.

*"All that Nature did omit,
"Art, playing Nature's
second part, supplied."
—Spencer.*



The big crepe-paper-like blooms glisten in the sun

HEMEROCALLIS--Day Lilies

These not too distant relatives of the Lily are invaluable in the hardy border not only for their profusion of lovely blooms but also for the graceful masses of healthy green foliage. Succeeding well in either sun or shade, dry or moist soil, they are excellent companions for numerous Lilies. Countless delightful combinations are possible. Our stock of Hemerocallis, grown here in the ideal climate of the Willamette Valley, is exceptionally vigorous.

GEO. YELD-1432-Lovely buff, apricot and terra-cotta blended. A handsome vigorous grower, very free flowering. August.

RAJAH-1464-A delicate orange, veined red with garnet brown eye. A striking plant in full bloom. 3½ feet tall. June-July.

BAGDAD-1454-Rich coppery brown and red over orange. A brilliant show in the June border. Fine for cutting. Vigorous free blooming.

LEMONA-1446-Delicate pale lemon-yellow, flowering profusely on 4½ foot stems. Very large blooms similar to an Oriental Iris.

Any of above four, each 50c. Dozen \$4.75.

HEMEROCALLIS--Hyperion--1470

Hyperion is a hybrid between Hemerocallis Sir M. Foster and H. Florham. The fine citron-yellow blooms are produced in profusion on 3½ foot stems and its graceful arching masses of foliage are an excellent foil for them. Horticultural experts consider this variety one of the finest of the color. The Royal Horticultural Society of Great Britain gave it their Award of Merit. As a cut flower it opens well in water and has a delightful fragrance. Perfectly hardy in any soil, sun or shade. Blooms July-August. Each 85c. Three for \$2.25. Dozen \$8.25.

HEMEROCALLIS--Fluva Rosea

Clon Rosalind--1460

A wild form from the Orient. A beautiful old-rose shading to a golden yellow center on a tall graceful stalk. Blooms June-July. Height 3½ feet. **Stock very limited.** Each \$3.25, 3 for \$9.35.

MRS. W. H. WYMAN-1450-A lovely pale glistening lemon-yellow on four foot stems. Long blooming season, very free flowering. One of the latest of the Hemerocallis to bloom beginning in August, often continuing into September. Three for \$1.50. Doz. \$4.75.

HEMEROCALLIS--Sonny--1468

A charming variety. Petals delightfully recurved, heavy firm textured. Color a lovely light yellow, iridescent in the sun. Free flowering. July-August. Ht 3 ft. Each \$1.75. 3 for \$4.65. Dozen \$15.00.

Selected *Fine Iris*

During the past fifty years I've seen the "Flags" of my mother's garden develop into the gorgeous beauties of the present-day Iris border. Hybridizers have performed miracles undreamed of yesteryear. Today's Iris rival Orchids in the delicate blending of their exquisite color combinations.

Most Iris bloom before the opening of the Lily season. I'm offering a selected list believing many of you will find them welcome. It is regretted so few can be shown in color but descriptions will have to suffice this year. Please rest assured, these are the cream of recent introductions. You will like every one.

DAYBREAK—1860—A huge Iris produced here in Oregon by the famous hybridizer, Dr. Kleinsorge. The enormous blooms are golden pink with a slight undertone of copper. Perfect form, slightly ruffled. Most appropriately named. One of the top Iris of recent years. **Each \$5.00.**

WABASH—2053—Among the most popular Iris of the decade. Pure white standards, rich velvety deep purple falls bordered white—one of the most striking of all Iris. Very tall, beautifully branched, blooming profusely with slightly ruffled blossoms. 1940 Dykes Medal winner, the highest award in the Iris world. **Each \$1.00, three for \$2.75.**

RANGER—1994—Another of Dr. Kleinsorge's hybrids introduced in 1943. An almost true crimson red, dark but very bright. A decided self with long cone-shaped closed standards and wide falls of glossy velvet. Bronze-orange beard on a brown toned haft with little venation. Truly a symphony in red. Very late blooming, almost the last, but free flowering on well branched stems. Very large flowers on 36-inch stalks. **Each \$6.00.**



DAYBREAK



WABASH



RANGER

ARCTIC-1813-(Kleinsorge). This is one of the best and most beautiful Iris originated by this famous Oregon hybridizer. A huge white and gold bloom, perfect in form with ruffled closed standards and broad falls that glisten like white enamel. Standards have a creamy tint and the center of the blooms shows bright yellow. Over four feet tall when established with frequently six foamy flowers open at one time. Each \$1.00.

AZTEC COPPER-1816-(Kleinsorge). A perfectly huge bloom, almost leathery in substance with ideally branched stalks 36 to 40 inches tall. The color is an indescribably harmonious blend of smoky violets and delicate coppers. You will love it! Each \$1.50.

AZURE SKIES-1817-A very new Iris, a self of pale azure-blue, considered by many to be the most lovely of all light blue Iris. Standards are beautifully held, the falls almost horizontal. These flaring falls add greatly to the "style" of the bloom. A well grown clump of Azure Skies will be the envy of your friends. Each \$5.00.

BERKELEY GOLD-1821-For several years this has been considered one of the finest among deep yellows. Its form is absolutely perfect, stems three feet and more, beautifully branched. A scarce variety in great demand. Each \$4.00.

BUCKSKIN-1831-Another of Dr. Kleinsorge's. I'm making a special mention of them as I consider his new things to be the finest of all the newer introductions. Buckskin is a beautiful tan whose 4-foot tall stalks display many huge blooms of ideal form with widely flaring falls. A true aristocrat, delightful with that very popular blue Iris, Great Lakes. Each \$1.00.

CHINA MAID-1846-Here's a truly luscious pink Iris, gigantic in size, a smooth blending of copper and gold tones producing a most delightful pink effect. A vigorous grower with tall stems, four feet or more and a heavy bloomer. Simply irresistible. Each \$1.00.

CITY OF LINCOLN-1849-An Iris of startling contrast, clear golden yellow standards, broad fiery red falls. One of the largest, brightest and finest of this type. Truly spectacular when well grown on an established plant. Each \$1.00.

ELMOHR-1871-The '45 Dykes Medal winner, the most coveted honor in the Iris world. Only the fact that it increases rapidly makes it possible to offer it at this low price. Color is a rich red-violet, one of the largest of all Irises with the great blooms daintily ruffled and of a silky texture and excellent substance. Elmohr is an Iris every connoisseur will want and with the much lowered price should have. Two years ago you would have paid \$10.00 for this outstanding Iris but we can now offer it at, each \$2.00.

ELSA SASS-1872-A new and unusual shade of yellow, clear sulphur, with a greenish cast in the throat and a near white blaze near the haft. Flower is good size, a well rounded form and delightfully frilled at the edges. Altogether delightful. Each \$1.00.

FAIR ELAINE-1875-Another fine yellow, quite different from the others. The standards are bright yellow, the falls a rich deep yellow highlighted with a fiery orange beard. Not only a grand subject in the garden but always spectacular on the show bench. Each \$1.00.

FLORA CAMPBELL-1879-The color of this Iris is that of the deep warm tones of brownish-red seen on the dark side of a luscious ripe peach. Russet-red or peach-red would be the best description. It is handsomely formed, very large bloom, a glowing, rich Iris. Each \$1.50.

FORTUNE-1882-(Kleinsorge). Another of the newer ones, \$10.00 just a few years ago and lower now because plentiful. A flower of extremely large size, solid and uniform old gold, broadly spreading form. Delightfully overlaid with an indescribable "rusty-red" that gives the entire bloom a sort of a glow. The gigantic blooms are well held on stems of medium height. Each \$2.00.

FRANK ADAMS-1885-Here's a variegata blend, a large Iris, tall and well proportioned. Rosy-tan standards flushed yellow and rosy-red falls. A color scheme that blends well in the garden picture. The flowers, stalk and foliage are unusually large size. Each 75c.

GARDEN FLAME-1888-A huge rose-red Iris, almost a garnet with a deep rose and brown area at the center. One of the richest and most attractive of all the dark Iris. A very large bloom with broad falls, blooming late, making it especially desirable. Each \$5.00.

GOLDEN FLEECE-1897-A huge bloom, lemon colored with creamy falls edged gold. A grand big flower, tall and vigorous, beautifully ruffled. Three years ago it sold for \$10.00 but more plentiful stocks make possible its offering at, each \$3.00.

GOLDEN MAJESTY-1900-A deep golden yellow of excellent habits and a real value at the price. The flower is large with broad falls and closed standards, does not fade in the sun, reliable everywhere. An all-around good yellow. Each \$1.00.

GOLDEN SPIKE-1902-A deep golden yellow, so striking that when first seen leaves one almost speechless. A lovely rich yellow with a heavy orange-yellow beard, large and tall with several blooms open at a time and they do not fade. Offered just a few years ago at \$15.00, but so plentiful today you can secure it at, each \$2.00.

GRAND CANYON-1904-Here's an Iris especially suited to bringing indoors and associating with the finest of oriental rugs. It is an odd blending of rather deep tones of plum, copper and gold. A beautifully poised flower, 40 inches tall, well branched and it flowers over a long season. The individual blooms are very large and hold up well in all weather. Each \$2.00.

GREAT LAKES-1905-Dykes Medal Winner '42. For the past three years this magnificent blue Iris has stood at the top of the list of 100 best Iris as selected by 125 judges of the American Iris Society. A broadly spreading regal type bloom, a clear blue self, with very handsome foliage, ideally branched stalks four feet or more tall. One of the most honored of all Iris. Now plentiful. Each \$1.50.

ICY BLUE-1911-The lightest blue self of all Iris. Beautifully formed flowers on well branched stems four feet tall. The blue tone is so light it is almost white, contrasting orange beard. Each \$1.00.

JUNALUSKA-1919-A unique blend of red, copper and rose, producing a glowing copper-red effect. Especially fine for garden picture effects. Early flowering, tall and well branched. It has been a best seller for several years. Very plentiful today. Each 40c.

LADY MOHR-1922-This is the newest introduction I'm offering. A perfectly huge bloom, in the most unusual coloring. Standards are oyster-white, huge and slightly fluted, with strong midribs. Falls are pale chartreuse or greenish-yellow, with prominent veining. Very prominent dark patch surrounding the beard. In the show garden it is a sensation with four-foot stalks carrying several open blooms at one time. An Iris for the connoisseur. Each \$20.00.

LADY NAOMI-1923-A huge, tall plicata, the white background entirely overlaid and speckled blue. The brownish cast near the center and the heavy orange beard, produce a delightful contrast. Each \$3.00.

LANCASTER-1928-A coppery old rose blend, broad petaled, with a soft brown marking near the haft. Very broad petals. Each \$2.00.

MAY DAY-1945-A luscious apricot-salmon with copper overlay. A large flower with pointed standards. The stems are very tall and well branched. Produces a colorful display in the garden. Each 50c.

MELITZA-1947-An unusual color effect, pale ivory-flesh, particularly effective in dull weather. The ivory-flesh is highlighted by a fiery tangerine-orange beard, producing a most unusual color effect. A very rapid propagator. Each \$1.50.

Iris Special

Any 6 for

\$5.00

All 10 for \$8.50

ARCTIC, No. 1813
CHINA MAID, No. 1846
CITY OF LINCOLN, No. 1849
ELSA SASS, No. 1872
FAIR ELAINE, No. 1875
ICY BLUE, No. 1911
MING YELLOW, No. 1951
MT. WASHINGTON, No. 1965
THE RED DOUGLAS, No. 2039
WABASH, No. 2053

NOTE-Not more than one of a kind, in one collection.

Dykes Medal Winners

1940 to 1945

Six Great Iris---Special for \$10

Year Winning		Year Winning	
1940	Wabash	1943	Prairie Sunset
1941	The Red Douglas	1944	Spun Gold
1942	Great Lakes	1945	Elmohr

Six of the world's greatest Iris. A few years ago they would have cost you \$50.00 or more. Today you can have them, one of each, carefully labeled for \$10.00.

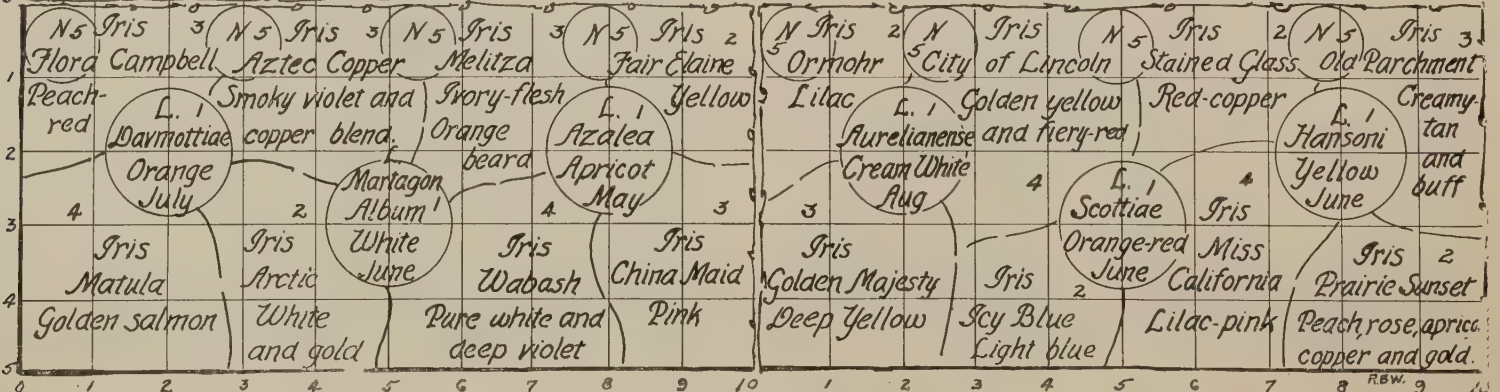
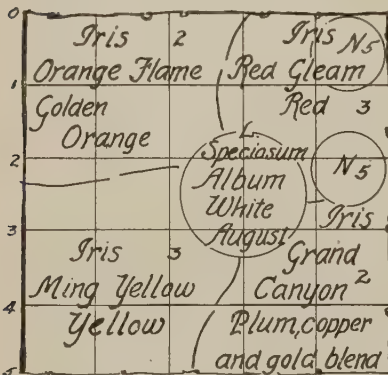
MING YELLOW—1951—An almost perfect yellow. A huge bloom slightly waved, clear, rich, smooth, without venation. Lighter in tone than Golden Majesty and much earlier. The petals are wide, with a very bright yellow beard. A sensation when first introduced. Each \$1.00.

MISS CALIFORNIA—1953—A gigantic lilac-pink of ideal growing habits. Though not the "pinkest" Iris, the tone is delightful and it succeeds everywhere. It produces great fans of purple-tinged foliage and wealth of 4-foot stalks with huge pink-toned blooms that last remarkably. This cost \$10.00 just a few years ago. Now, each 60c.

MODISTE—1958—Pale mauve on the pinkish side of lavender. A lovely thing in combination with pale yellows. The bloom is huge, full rounded shape of ideal growth. Stalks branch well and the blooms are beautifully spaced. Each \$1.00.

Note---

The suggested number of Iris plants indicated in these unit plans has been kept low that there will be ample room for inter-planting other things to secure a continuous display of color throughout the season. Many of the "Little Cousins" offered on pages 34 and 35 can be added. And, of course, there are scores of other perennials and also annuals that can provide a succession of bloom. These unit plans could also be spread out to seven or eight feet wide using the same general arrangement and this would give you added space for planting to secure a long succession of bloom. Personally, I never like to build a border less than seven feet wide due to the difficulty of obtaining a good succession of bloom. The small circles with an N and the figure 5 in them suggest that five bulbs of Narcissus be located therein.



MOHRSON—1959—A spectacular flower, perfectly huge in size, with ruffled, crinkled blossoms of a deep violet color with darker veins and a rich bronzy-gold beard. Each 75c.

MT. WASHINGTON—1965—A giant white of imposing form. Very tall, wide at the hafts and broadly flaring, it ranks with the best of the whites. Heavy gold beard. Each \$1.00.

MULBERRY ROSE—1966—Most aptly named, this comparatively new Iris is "different" in color. Deep pinkish-mulberry, shaded brown, probably describes it best and the heavy bronze beard adds to its beauty. The very tall stems carry the self colored blooms well and the branching is excellent. A truly fine Iris. Each \$4.00.

NIGHTFALL—1970—The velvety rich dark pansy-purple falls with almost no veining on the haft combined with standard several shades lighter, make Nightfall a striking color combination. The petals are almost plush-like in substance with a glistening sheen and beautifully held on well branched stems. A real beauty. Each \$2.50.

NYLON—1972—A coppery-tan self with a heavy gold beard. One of the largest Irises with heavy, well branched stalks. A showy garden subject. Each \$1.00.

OLD PARCHMENT—1974—Here's a most unusual color break in Iris. Both falls and standards are a light creamy tan with a golden buff overlay. A distinctly beautiful Iris introduced a few years ago at \$15.00 each. A perfectly huge bloom, heavy in substance and very long lasting. A Kleinsorge production. Each \$1.50.

ORANGE FLAME—1975—A large, tall orange colored Iris. It stands out like a flame in the garden. Standards are golden orange, exceptionally brilliant; falls a fiery copper-red, semi-flaring, with glowing beard and finely netted haft. Each \$2.00.

ORMOHR—1979—Possibly the largest Iris in existence, not overly tall but produces several great blooms on well branched stalks. Color pale lilac with a silvery cast, veined violet. Each 75c.

PINK REFLECTION—1987—Imagine a chamois-skin pink Iris with just a suggestion of a buff undertone, a peculiar and enchanting shade unlike anything else. Sounds intriguing? A crisp and clean cut bloom, flaring in form, with very heavy texture and a lemon beard. Height 3 feet. Very late blooming. Each \$6.50.

PRINCE OF ORANGE—1992—(Kleinsorge). Solid golden orange, one of the richest things in the garden. Medium size flowers, very flaring in form, widely spaced, well branched. Each \$1.00.

Graphic Plans

Fifteen years ago while devoting my time to writing garden articles for various magazines I conceived the scheme of garden plans developed in sections 5 x 5 or 5 x 10 feet, each unit complete in itself. These units could be combined just like dominos to produce small or large gardens or borders to fit any size or shaped location. Each unit was to be planned for a special season such as spring or fall or for a complete succession of bloom from frost to frost, depending upon the materials used. I thought at the time, if I were producing a catalog, such unit plans added to it, to suggest combining the plant material offered therein, would be a desirable feature.

So here they are, plans for units 5 x 5 or 5 x 10 feet, using mostly materials offered in this catalog. It is hoped they will give you ideas and aid in combining our Lilies, Iris, Narcissus, etc.

These little plans are far from complete as countless other plant varieties could be added to the schemes. They can, however, give you ideas or form the ground work for producing interesting combinations and garden pictures.

PRAIRIE SUNSET—1990—Fifth place winner in the Iris Society Symposium. A color blending, almost indescribable, of peach, apricot, rose, copper and gold. It has to be seen to be realized. Simply stunning, you'll get a thrill every time you look at it. A fine big flower. Dykes Medal 1943, when it cost \$10.00. More plentiful now and can be had at, each \$2.50.

RED GLEAM—1995—A red Iris that actually looks red. Critics say "It's almost scarlet!" It is of good size, semi-flaring in form, three feet tall and blooms freely. Texture is velvety but excitingly brilliant. Each \$1.50.

ROYAL SCOT—2003—A tall and large flowered red trimmed plicata of a pleasing shade of burgundy-red. From a short distance it gives the appearance of being a red Iris. Form, substance and stem are good; it increases fast and blooms freely. Each \$5.00.

SABLE—2007—Here's an Iris everybody wants. Almost black; a uniform shade of the deepest blue-black-violet, with a blue beard. Sable has everything, large size, reasonably tall stalks, thick substance and a wonderfully lustrous sheen. Each \$1.50.

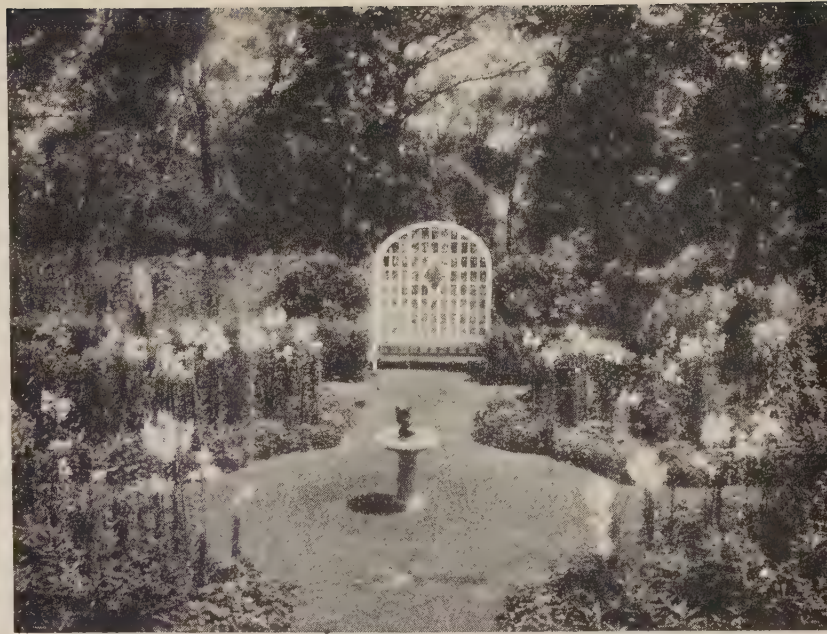
SIEGFRIED—2015—A flower of large size, pale sulphur yellow, entirely overlaid with a stippling and dotting of purple, and a buff overtone blending them together. A popular much wanted variety now plentiful but still a good buy. Each 50c.

SPUN GOLD—2027—The Dykes Medal winner in '44. It has everything, great size, good branching, tall stems and a rich solid yellow color. Greatly in demand due to its exceptional record. Still not plentiful. Each \$4.00.

STAINED GLASS—2028—A glowing red-copper self, with the sun behind it, one of the most brilliant Iris ever seen. Planted in the right spot it resembles nothing quite so much as stained glass, rich and brilliant, almost aflame. Medium height. Each \$1.00.

THE RED DOUGLAS—2039—This is not the reddest Iris but the coloring is gorgeously deep and intense. Colossal in size, as smooth and heavy as a piece of the richest plush. Deep rosy-wine-red with a rich orange beard. Dykes Medal 1941. Each \$1.00.

TIFFANJA—2043—This is a big flower, a new and unique plicata of good form and thick substance. Smooth and clean cut; standards colonial buff; falls creamy white, definitely bordered buff, brushed at the haft and speckled around the border with light brown. Each \$3.50.



"... Such gardens are not made, by saying, 'Oh! How beautiful!', and sitting in the shade."
—Kipling.

Gardens as attractive as this are not as difficult as you may think. It is largely a matter of learning about the plants and their habits. If you know when they bloom, their height and color and about how much space to allow for each plant, then you are ready to plan and plant. But make your plan first. A good garden doesn't just happen. There is much study first.

SHIPPING

Iris are shipped from early July on but please don't wait till late to send your order as many varieties will be sold out.

ORDER NOW!



for Iris Borders

You'll note the plan units are divided into small squares. These represent square feet in the garden and from them you can estimate how much space a given group of the various plants requires. The figure in each space is the suggested quantity of that variety of plant or bulb for the space.

Note, also, that the general color effect is given and in some cases the month of bloom. Neither Iris nor Narcissus need this to be given. A careful study of the scheme will give you a fairly clear mental picture of the garden plot as it blooms. If you know all the plant varieties used you will get a very clear picture. It is these mental pictures that make your garden planning a success with these unit plans. They give you ready-made combinations, planned for pleasing color schemes and succession of bloom.

Maybe you say a 5-foot wide border is too wide. Then stretch the scheme out to 4 x 12 feet. It will give about the same area. Or widen it out to 6 x 8 feet. The plant material needed will be about the same and the color scheme or succession of bloom will be identical.



SHOWY PERENNIALS

Not Commonly Seen

DICTAMNUS, The Gas Plant—An old-fashioned perennial, once established in your garden will thrive several generations. The ashlike leaves are delightfully fragrant and the flowers, freely produced, have tiny glands secreting a resinous volatile matter, which may be ignited in the evening on hot days without damage to the plant.

Dictamnus Fraxinella caucasicus—1020—Rosy pink. June and July. Prefers a deep rich loamy soil. Full sun. Once planted avoid disturbing roots. An extremely interesting subject for the hardy border. Each 70c, Three \$1.90.

Alba—1021—The white form of the above. Fine and long lasting for cutting. Each 75c.

ERANTHIS Hyemalis—1025—Winter Aconite. Lovely little buttercup-like blooms produced ahead of the Crocus and not seeming to mind the worst of weather conditions. Will thrive even under trees and seed themselves forming fine colonies. Plant at once upon receipt, firmly, 2 inches deep, sun or shade, 15 to 18 bulbs to the square foot. Dozen 75c, 50 for \$3.00.

INCARVILLEA Delavayi—1255—The Trumpet Flower. A comparatively little known perennial of striking beauty for the sunny border. Rose-pink flowers in large trusses on 18-inch stems. Each 60c, Three \$1.65.

MERTENSIA Virginica—1233—Virginia Cowslip or Blue Bells. A most interesting native spring flowering perennial for the shady or partially shady border. 1 to 1½ feet tall with lovely blue flowers fading to pink. Charming in an open woodland with Daffodils. Three for \$1.20, Dozen \$4.75, 100 for \$36.60.

Iris Kaempferi---RAINBOW IRIS

I've never been able to understand why more gardens do not use these magnificent Iris more freely. They offer, without question, one of the most gorgeous splashes of color in early summer. Give them a spot that can be kept moist from early spring until after blooming. Avoid all lime in the soil and feed sparingly with liquid manure as buds begin to form. They reward you handsomely with huge blooms beautifully held above graceful foliage. Plant in masses or borders, group them around your pool and you will have pictures long to remember. These varieties are an extra fine strain, far superior to those commonly offered. They come from the private garden of a west coast collector.

New for 1947

LILAC QUEEN—1727—A large double, lilac purple shading lighter towards the base. Margins delightfully frilled. Each \$3.00.

IMPERIAL GEM—1723—A big six-petaled beauty, pure white with purple border and a light flecking of the same shade. Each \$2.50.

SUNSET GLOW—1742—A beautifully formed double flower of rich amethyst violet. Truly lovely. Each \$2.50.

THE PEARL—1743—A fine bloom having six huge petals, pearl white flecked imperial purple. Stunning. Each \$2.50.

VICE REGAL—1751—A gorgeous bloom, semi-double in form. Rich pansy purple, lemon yellow at the base. Each \$4.00.

VIOLET HAZE—1752—Another with six large petals of a delightful shade of aconite violet with white flecks. Each \$2.75.

WABASH—1754—A semi-double flower of lovely form. The huge petals are pure white with contrasting borders of violet purple. Lovely. Each \$4.00.

BLUE POOLS—1700—A very large six petaled double bloom, deep ultramarine blue. Gorgeous. Each \$3.00.

DEEP SHADOWS—1715—Deep purple shot with blue, highlighted with lilac stamens. Large, double. Each \$2.50.

GIANT GLORY—1720—A semi-double with huge 12 inch blooms of deep purple. Truly spectacular. Each \$4.00.

MYSTERY—1730—A very deep purplish blue with dark stamens. A huge six petaled flower, very striking. Each \$4.00.

ROYAL ROBE—1735—A very rich purplish crimson shading to white at the base. Large, double. Each \$3.00.

SHOT SILK—1740—Six broad frilled petals, deep purple with sky blue veinings. A striking flower of great size. Each \$2.50.

THE SWAN—1745—A glorious double white with six petals of exquisite texture. Free flowering and strong growing. Each \$3.00.

TWILIGHT—1750—A deep magenta lake with slight purple shade. Six very large petals, waved and crinkled. A very showy flower. Each \$4.00.

WHITE TREASURE—1755—A big white bloom frosted with purple. Six gorgeous petals which fairly shimmer in the sunlight. Each \$3.00.

"Iris Kaempferi takes the stage with brazen flourish of trumpets; there is nothing like it in the garden for arrogance, for subtlety, for obviousness, for sheer insolence of beauty."

—Reginald Farrer,
in "Alpines and Bog-Plants."

Special

RAINBOW IRIS

One plant each of four of the finest Rainbow Iris, each carefully labeled. Bought separately, they total \$12.50.

SPECIAL \$10.00

DEEP SHADOWS

WHITE TREASURE

BLUE POOLS

TWILIGHT

IRIS
KAEMPFER
RAINBOW IRIS





SWISS HYBRID PANSY



OREGON GIANT POLYANTHUS
About Half Actual Size

QUALITY PANSY SEED

Oregon is world famous for fine pansy seed and we feel most fortunate to offer what we believe to be the very best. Whether you want mass plantings of separate colors or mixtures, here they are. The huge Giant Hybrid Swiss Mixed produce their gorgeous blossoms of unbelievable size on compact plants. Color range defies description.

CORONATION GOLD—1480—The best pure yellow from a reselected lot of huge Swiss Pansies. Try them as a ground cover beneath red or copper toned Azaleas; among blue Scillas or Hyacinths. Lovely among red or white Tulips and other spring bulbs.

IMPROVED FIREBEACON—1481—This is a coppery-red Swiss Pansy—the red of Wall-flower rather than a purple red—and often has a touch of orange. The blooms are huge and striking. Delightful with any of the yellow flowered bulbs or shrubs.

MONT BLANC—1482—A truly wonderful pure white of immense proportions. You will like it under any of the spring bulbs or shrubs.

ULLSWATER—1483—A deep ultramarine blue Swiss Pansy. The finest I have ever seen. Beneath yellow flowered Daffodils or Tulips, massed below yellow Azaleas, the effect is stunning.

GIANT HYBRID SWISS MIXED—1488—A reselected strain, clear brilliant colors, including exquisite pastels, henna, flame, fuchsia, carmine and a touch of blue. They produce huge blooms on compact plants.

OREGON GIANT MIXED—1489—This famous strain is too well known to need description. Always in demand. This seed is direct from the originator. Cultural Directions with Pansy and Delphinium Seed.

BLUMLISALP—1484—(Flower of the Alps). A new strain of Swiss Pansy in rosy tints of pale pink to a carmine rose. It is lovely as a ground cover for any of the pink, white or blue bulbs; with Azaleas, Asters, Zinnias or Petunias; good with blue or white Iris and many other things. In the show beds of the grower, these pinks with their four-inch blooms in early spring draw widespread comment. You'll not want to miss them.

Delphinium Seed

Pacific Hybrid Strain—No. 1490

This seed is from the choicest selection of Pacific Hybrid stock. I've never seen as good varieties anywhere and recommend it without reservation. All shades from the darkest to light blues, mauves, pinks and white. Very tall branching plants with huge flowers.

MISCELLANEOUS SEED

Here are a few varieties of seed of which we have limited supplies, most of them described in the bulb lists.

Galtonia Candicans, No. 1240

Ixiolirion Ledebouri, No. 1260

Trillium Ovatum, No. 1294

Notholirion Thompsonianum, No. 2130

See Page 38 for Lily Seed

All seed on this page—\$1.25 per packet—postpaid

Primrose Seed

For two seasons I've tried to secure a supply of this particular strain of Primrose but short stocks have prevented. This year the supply is a bit greater and I can offer a limited number of packets.

These are Polyanthus, the "many flowered" Primulas. They bloom early and over a very long season. Well grown, the individual flowers measure 1½ to 2 inches and are carried in large umbels on sturdy stems up to 15 inches tall. Colors are unbelievably varied from almost black through the reds, coppers, golds, tangerine, cream and white; from appleblossom pink to clear pink and rose; apricot, burgundy, lavender and a host of two-toned pastels. They offer the grandest display of varied colors of any plant group. If you grow these well you will win all the blue ribbons at the spring flower show. We offer fresh seed, while it lasts, of this Primula Polyanthus, Oregon Hybrids, No. 1454, per packet, \$1.25.

OTHER PRIMROSE SEED

Primula Auricula, No. 1450

Primula Veris Colossea, No. 1452

HARDY CYCLAMEN SEED

A darling little gem for rock gardens or a shady spot in the front of the border. Its pink or white blooms come in late summer and fall when few other things flower. The lovely marbled foliage is attractive even when the plants are not in bloom. I can offer a few packets, mixed only, in pink, rose and white, fresh seed, No. 1460, at \$1.25. You'll love it!

Delightful LITTLE COUSINS of the Lilies

BRODIAEA Capitata-1060-An early blooming variety of California Hyacinth with a cluster of lilac-colored blossoms on 1 to 2 foot stems. Culture as above.

Ixiodes-1062-An attractive bright yellow. Ht 8 to 12 in. Attractive, similar to B. Laxa.

Lactea-1062-White with an attractive green vein through the bloom. Ht 1½ ft.

Grandiflora-1066-Up to ten long lasting bright blue flowers on 6 to 10 inch stems.

Laxa-1068-Often called the Triplet Lily. Clear blue tubular blooms on 18 inch stems. A hardy vigorous plant.

Mixed-1069.
3 bulbs one kind, 50c. Doz. \$1.85.

CALOCHORTUS

Mariposa Lily or Butterfly Tulips

These are the Western American Tulips and though they are quite different from ordinary tulips they are most attractive. Blooms are white or brightly colored, some very brilliant, often several on a stem. They like open woodland or the shade of deciduous trees or shrubs, loose well drained soil with plenty of leaf mold. Plant about 3 inches deep in scattered clumps.

Albus-1100-The Pearl Calochortus, pure white, 1 to 2 feet tall.

Amabilis-1104-Same as Albus; clear yellow.

Amoenus-1108-Like above; rose colored.

Citrinus-1112-Lemon yellow, brown spots

Vesta-1137-Large and tall. White, mottled purple and rose. One of the finest of all the Calochortus.

Venustus purpureus-1130-Dark lilac.

Venustus roseus-1134-Lilac spotted rose.

Splendens-1138-Bright lilac.

Mixed-1139.

3 one kind, 50c. Doz. one kind, \$1.85

CALOCHORTUS Clavatus-1116-A huge flowered Mariposa, rich yellow. 4- to 6-inch blooms. 3 for 85c, Doz. \$2.75, 25 for \$5.25.

SPECIES CROCUS

These lovely little gems from the far corners of the world will bring joy and beauty to your garden almost before the snow is gone. They are hardy and permanent, flowering and increasing year after year. Charming in the rock garden among the various Sedum or other creeping plants. You will love them!

Chrysanthus E. Aug. Bowles-1152-Butter yellow.

Chrysanthus Snow Bunting-1153-White.

Etruscus-1154-Zwanenburg var. Blue-violet.

Salsmanni-1155-Lilac, yellowish throat.

Sieberi-1156-Blue with golden throat.

Susianus-1157-Golden yellow.

Tommassinianus Whitewell Purple-1150-Pale reddish-purple.

Versicolor picturatus-1159-Cloth of silver. White feathered violet.

6 of one kind 75c. Doz. of one kind \$1.40.

50 of one kind \$5.60. Hundred \$11.20.

No order for less than 6 of one kind.

CAMASSIA Leichtlinii. A native Oregon bulb carrying star-shaped blue or creamy-white flowers on 3 foot stems, sometimes as many as a hundred buds to one stem. Easy culture and perfectly hardy. Plant in fall 3 to 6 inches deep, 6 to 8 inches apart. Seems to prefer a heavy soil and ample moisture in the spring. We offer two colors, White-1160, Blue-1162. Specify color, please. 3 each of any one color 50c. Doz. \$1.75. 100 of one kind or mixed \$12.50.

CYCLAMEN Neopolitanum-Hardy Cyclamen. Similar to the popular greenhouse varieties. Delightful in the shaded rock garden or front of a shady border. Thrive in open well drained soil containing plenty of leaf mold or peat. They must never want for moisture. Bloom late summer. Barely cover corms. 1170-Pink. 3 for \$2.00. 1172-White. Each \$1.50, 3 for \$3.75.

CYCLAMEN Atkinsii-1176-A lovely little dwarf gem with pinkish-lavender blooms very early in the spring. Ideal for the rock garden in partial shade. Same culture as above. Each \$1.75.

GALANTHUS Elwesi-1236-Snowdrops. This is the giant Snowdrop growing to a foot tall. They should be planted thickly and will thrive for years undisturbed. Plant them under trees or shrubs, in the rock garden or woodland. Prefers a rather cool, moist soil. 6 for 90c, 25 for \$3.50.

ERYTHRONIUM

Trout Lily or Dog Tooth Violet

Woodland plants with lovely lily-like blooms in delicate pastel tones. Very hardy. They enjoy a loose, gritty soil with PLENTY of leaf mold and considerable shade. Be sure they never want for moisture. An ideal bulb for naturalizing.

Albidum-1188-White, sometimes flushed pale blue.

Americanum-1186-Large pinkish-yellow.

Californicum-1180-White, chrome yellow center.

Revolutum Pink Beauty-1191-One of the finest.

Citrinum-1193-Yellowish-green. Unusual.

Dens Canis Rose Queen-1194-Fine deep pink.

Dens Canis Album-1196-White, charming.

Dens Canis Frans Hals-1195-Light reddish-violet.

Giganteum-1184-Bright butter-cup yellow.

Hendersonii-1182-Light purple, center deep maroon; very striking.

Tuolumnensis-1192-Golden yellow, quite distinct, forms large clumps by off-setting.

3 Bulbs any one kind 60c, Doz. one kind \$2.10.

Note—No orders for less than 3 of one kind unless priced singly.

FRITILLARIA

Another woodland bulb with drooping or nodding flowers often resembling small lilies. Lovely for naturalizing or the rock garden where they may be undisturbed for many years.

Pallidiflora-1208-Large pale yellow flowers, bell-shaped, 8- to 12-inch stems.

3 Bulbs \$1.40, Dozen \$5.25.

Meleagris Aphrodite-1211-A fine, strong growing white variety.

Meleagris Artemis-1212-Grayish-purple chequered. Very fine and unusual.

Meleagris Charon-1213-Very dark purple, almost black.

Meleagris Poseidon-1214-Whitish, chequered purple. Very large blooms on 6-inch stems.

Meleagris Saturnus-1215-Flowers pinkish, chequered. Rare.

Pluriflora-1216-Pink, very rare.

Pudica-1217-Clear yellow.

Thunbergii-1204-A graceful, distinct species, creamy white, veined green with as many as ten blooms to a plant. Partial shade. 1½-2 feet.

Lanceolata-1205-Dark purple mottled with greenish-yellow. A rare unusual form.

6 for 85c, Dozen \$1.65.

Recurva-1207-Beautiful scarlet blooms checkered with yellow. 75c.

Karadaghensis-1206-An unusual greenish-yellow about 6 inches tall.

Each \$1.00

IRIS RETICULATA-1250-A lovely early flower. A dark rich purple-blue. Fine in pots, or for cutting. 1 foot tall. Plant in the fall 3 to 4 inches deep, sunny well drained spot. 3 for 75c, Dozen \$2.75.

IRIS RETICULATA Cantab-1251-An exquisite light blue with orange markings. Larger than the above and a bit taller. Culture as above. 3 for \$1.25, Dozen \$4.75.

CALOCHORTUS



SPECIES TULIPS

IXIOLIRION Ledebourii—1260—A choice, hardy bulb producing in late May several deep blue tubular flowers on slender stems. A distinct addition to the late spring garden. Plant fall, 3 to 4 inches deep in a sunny, well drained spot. 6 for \$1.25.

MUSCARI—Grape Hyacinths

One of the indispensable blues of the early spring garden. A long-lived, easily established bulb, delightful in masses, either in sun or shade. Naturalizes well in the wild garden.

Armeniacum—1264—Early Giant. Deep cobalt blue with a distinct white rim. Many spikes with flowers larger than Heavenly Blue. Dozen \$1.25, 100 for \$10.00.

Comosum plumosum—1266—The Feathered Hyacinth. Fine feathered plumes of violet colored filaments in May. Unusual and fascinating. 6 for 50c, 100 for \$7.50.

Natholirion Thompsonianum

Formerly **LILIUM ROSEUM**

NOTHOLIRION Thompsonianum—1230—A rare bulb from the Himalayas formerly offered as *Lilium Roseum* or *Lilium Thompsonianum*. The lily-like blooms are trumpet-shaped, rose or lilac colored on 2 to 3 foot stems. Comparatively easy to establish. May flowering. PD 3 to 4 in. Sunny well drained spot. Starts growth very early so give protection from frost injury. Flowering bulbs, each 65c. 3 for \$1.75.

NOTHOLIRION Thompsonianum Magnificum—1231—An unusual and very rare form of this lovely Lily-like flower. This is a hybrid form from that famous French hybridizer, Abbé Souillet, with far larger blooms. Each \$3.75.

SCILLA—Spanish Bluebells

One of our most attractive May flowering bulbs; known and loved by everyone. They thrive and multiply most anywhere, even under fir and pine trees where almost nothing else survives. PD 3 to 4 in. All our bulbs are Oregon grown.

SCILLA Campanulata:

Alba Maxima—1270—Large white.

Rose Queen—1274—Pink.

Excelsior—1278—Blue.

Mixture—1282—White, pink and blue.

SCILLA Siberica—1286—Deep blue, nodding.

SCILLA Bifolia—1284—A blue with some white and reddish flowers. Wheel or star shaped, mostly nodding. A seldom offered variety.

Any of above:

6 for \$1.00, Dozen \$1.85. Minimum order six.

SCILLA Peruviana—1283—This is a rare variety with purple to reddish, sometimes white flowers on 12 inch stems. Stock is limited.

3 for \$1.00. Minimum order three.

SPREKELIA Formosissima Superba—1564—Aztec Lily. Brilliant scarlet blooms of almost butterfly shape and formation. One of the Amaryllis family from Mexico. Hardy with protection south of Washington. Good pot plant in the house. Multiplies rapidly and brilliant in the hardy border. Each 75c, Three for \$2.00.

VELTHEIMIA Viridiflora—1566—A rare plant from So. Africa. Fine in a cool greenhouse, flowering in the spring. Produces a two-foot spike of rose and green, drooping, tubular flowers. Each \$1.10, Three for \$3.00.

Tulip species, mostly from Southern Europe and Asia, enjoy dry, sun-baked locations where little moisture reaches them during the summer.

They are beautiful and interesting, not at all like the usual garden Tulips. Many are quite dwarf but all have charm and individuality. Plant them in the dry rock garden or any warm nook in little groups where they will enliven the early garden picture. You will like them, I'm sure.

Eichlerii—1306—Crimson scarlet, yellow and black center.

Marjoletti—1316—Light yellow, edges red.

Sylvestris—1320—Rich golden yellow, fragrant.

Turkestanica—1324—Small star-shaped, white. Several on a stem.

Chrysantha—1230—Bright yellow, medium size.

Kaufmanniana—1332—A spreading white bloom, back of petals red.

Kaufmanniana Elliott—1333—White, exterior very bright red. A very early red of good size.

Kaufmanniana Primrose—1331—A light primrose yellow, yellow center.

Oculis Solis—1301—A tall variety with large bright red flowers, large base black with yellow margin. Very showy.

Praestens Tubergens var.—1319—An early dwarf, orange-scarlet, two to three flowers on each stem. Brilliant for massing.

Sylvestris var. Tabris—1321—Lemon-yellow. A free flowering variety from Persia.

Praecox—1338—Very early, red or scarlet with purplish bottom.

Retroflexa—1340—Large bright crimson.

Any of above:

3 one kind 75c, Doz. one kind \$2.75.

No order less than 3 of one kind.

Clusiana—1304—One of the most charming of all the specie Tulips. Offered on the outside back cover.

HERE'S A NEW BOOK!

Plant Magic

By JAMES P. HAWORTH

Here's a brand new book for those who long to create new plants, who have enthused over the mystery of plant mutations and sports. If you've wondered about the how and why of these strange developments of plants, if you've wished you could grow startling new and different plants, here's a guide that may be the "open sesame" you desire.

Jim Haworth has spent years experimenting with various chemical inductants, with X-Ray and other treatment of seeds and plants. His research has been world wide, his travels even into the distant parts of the Orient.

PLANT MAGIC is not a technical book but a "guide for the back-yard gardener; not a text-book but a simple, easily understood presentation of a subject as new as tomorrow.

If you are a true searcher for plant knowledge, if you are looking for a book that is different, here's one you want. Plant Magic may easily open the door to an entire new field in the world of plants, a field of opportunity unlimited.

\$3.00 per copy, postpaid.

T. Acuminate—1300—Either yellow or pink.

Hageri—1312—Bronze scarlet. Striped green on the outside.

Eichleri Excelsa—1307—An improved form with very large crimson flowers.

Fosteriana Princeps—1309—Very fine large red flowers on short stems. Excellent in the rock garden.

Ostrowskiana—1303—Elegantly reflexed red blooms on slender stems.

Maximowiczii—1317—Another red for the rock garden. Earlier than *Linifolia*.

Linifolia—1315—A charming species for the rock garden with small scarlet-vermilion blooms with a black base.

T. Australis—1302—Yellow, reddish outside.

Kaufmanniana Gaiety—1335—A very dwarf, creamy-white bloom that seems to rest on the leaves. Charmingly different.

Persica—1336—One to three yellow blooms. Rare.

Shrenkii—1325—Red, yellow tipped.

Kolpakowskiana—1314—Yellow, often red or purple outside.

Tarda (Dasystemon)—1322—Small white and yellow, several to a stem.

Any one of kinds above: Each 50c, Three \$1.35, Dozen \$5.50.

Kaufmanniana Brilliant—1334—A soft crimson.

Sprengeri—1323—Very late and distinct, scarlet with yellow anthers. Flowers after the Darwins, 20 inches tall.

Either of 2 above, Each 70c, Doz. \$7.70.

Batalini—1328—A pale-buff yellow, dainty and rare.

Wilsoniana—1338—Deep vermilion-red, small blue base, yellow stamens. A fine May bloomer for the rock garden.

Either of 2 above, Each \$1.00, Three \$2.75.

A MAMMOTH TULIP

Fosteriana Red Emperor—1310—A magnificent variety, with huge vermilion-scarlet well rounded blooms. Has a handsome black and yellow bordered base. Among the world's largest tulips, tall and especially welcome as it is early, in bloom with the Daffodils. Three for 75c, Doz. \$2.75.

TRILLIUM—American Wood Lily

This delightful spring flower prefers partial to full shade and a soil almost wholly leaf mold and peat, cool and moist. Plant in groups for best effect.

Erectum—1296—An unusual variety, brown to greenish-purple, stems a foot tall.

Erectum Album—1297—White form of above.

Grandiflorum—1295—An eastern variety, white, fading rosy-pink.

Ovatum—1294—A western species, large blooms, white turning to rose.

Stylosum—1293—Pink or rose. Large.

Undulatum—1298—A tall eastern variety, white veined purple.

Any of the above:

Three for 75c, Doz. \$2.75. Not less than three of one kind.

The World's Finest
ROSES
 "Oregon Grown"

Here they are, the Roses for which you have been asking. So many of you Lily customers wrote asking if we sold Roses, that this year we offer a selected list of top varieties.

However, vital as are the varieties, the quality of the plants is even more important. Oregon is world famous for fine Roses and the reputation is well earned. These plants I'm offering are the cream of the crop. They are grown by a friend of mine whose roses I believe to be absolutely the world's best. He has agreed to supply me with the very finest of the thousands he grows. These super-quality roses are available in but limited quantities and it's first come first served. When these extra choice plants are exhausted, we must decline further orders.

They will be shipped in mid-November (by far the best time to plant). BUT your order should be in early as top quality roses are far from plentiful. I had to make my reservation months ago or none would have been available. So get your order in at once. You'll never buy better Roses anywhere.

Roses Shipped FALL Only.



PEACE (Pat. No. 591)



CALIFORNIA (Pat. No. 499)

CALIFORNIA—RP25—Pat. Considered a sensational novelty as an All American Winner in 1940. A glorious shade of ruddy orange toned with saffron-yellow, with exterior of broad petals overlaid with saturn-rose. A dual tone effect of indescribable loveliness. Buds long and pointed opening into six inch flowers. Growth vigorous, with healthy glossy green foliage. Each \$1.50, Doz. \$16.50. Postpaid U. S. A.

CHARLOTTE ARMSTRONG—RP27—Pat. All-American '40. A very long blood-red bud, opening cerise in hot weather, spectrum-red in cool weather, beautifully shaped and extremely free flowering. The deep-green, leathery foliage is highly resistant to mildew. Altogether a desirable rose. Each \$1.50. Dozen \$16.50. Postpaid in U. S. A.

CHARLOTTE ARMSTRONG

PEACE—RP47—Pat. Probably the most important new Rose introduced in a decade. Exhaustive nation-wide tests have found it successful in every Rose growing section. From the cool moist climate of Puget Sound to the hot dry plains of Texas and the trying climate of the open prairie, "Peace" has made good. Too, it's a beautiful Rose, the buds yellow with edges pitted cerise and gradually opening into glorious five-inch blooms of alabaster white with a high pointed center heart of tawney yellow. A vigorous plant, foliage almost holly-like, blooming throughout the season in the greatest profusion. If you have room for but one rose, it should be "Peace." Postpaid within U. S. A. \$2.50 each.

MIRANDY—RP44—Pat. All-American First Place winner 1945. A gorgeous fragrant red Rose with big rich red buds, opening a glowing chrysanthemum red, a large full bloom (50 petals), with excellent lasting qualities. Mirandy has a wonderful damask fragrance equaled by few roses. A strong, free branching, vigorous grower, blooming almost continuously with dark green heavy-textured foliage. Postpaid within U. S. A. Each \$2.00. Doz. \$22.00.

Copyright 1944 Armstrong Nurseries

MIRANDY



Fine Roses



MARY MARGARET McBRIDE (Pat. No. 537)

MARY MARGARET McBRIDE-RP42-Pat. The deep coral-pink buds are slender and pointed and open slowly into beautiful 5-inch blooms of clear salmon-pink suffused with shimmering gold at base of petals. A tall healthy plant blooming freely with every qualification of a fine Rose. Mild fragrance. All American '42. Each \$1.50, Doz. \$16.50.

GRAND DUCHESSE CHARLOTTE



REMEMBER, WE
PAY THE
POSTAGE ON ALL
ROSES WITHIN
U. S. A.

GRANDE DUCHESSE CHARLOTTE-RP31-Pat. All American '42. A true Blue-blood of the Rose world. The bud is very long and pointed, a gorgeous morocco-red that develops into a lovely soft coral-pink flower on long strong stems. Plants are vigorous and bushy with large glossy foliage. The flower is delightfully informal with a fragrance somewhat like a Carnation. An aristocrat well worthy of its namesake. Each \$1.50, Doz. \$16.50.

ETOILE DE HOLLANDE-RS57-One of the experts considers this the Standard by which all new Roses are judged. An old Rose but still one of the finest of all. Not to be overlooked just because it has been with us for many years. It with stands heat better than most varieties, magnificent in size and very free flowering. Not only are the flowers perfect when half opened but equally good when full blown. Each \$1.25, Dozen \$13.75. Postpaid in U. S. A.

LOWELL THOMAS-RP39-Pat. All American 1944. A vibrant chrome-yellow bloom from exquisite buds. Its clear vivid color makes it one of the finest of the deep yellows. A strong grower with excellent foliage and stiff stems. A rose full worthy of its famous namesake. Each \$2.00. Dozen \$22.00. Postpaid in U. S. A.

PRESIDENT HOOVER-RS69-Here's a foolproof Rose that's also tops in quality. It has everything, fine buds, big handsome bloom of cerise-pink, flame, scarlet and yellow, broad thick petals and delightful fragrance. Good throughout the season but especially brilliant when cool autumn nights bring out added brilliance in tones almost unbelievably rich. Excellent for flower arrangements, stands unlimited cutting. Each \$1.25, Doz. \$13.75. Postpaid U. S. A.

RUBAIYAT (Pat. applied for)-RP48-The unchallenged winner of the 1946 All-American Rose Trials. Brilliant profusion of long graceful buds. Color a rich crimson. Tall, vigorous, free flowering with fine dark green foliage. Highly disease resistant. Another gorgeous rose conquest of the famous McGredy's of the Emerald Isle. Each \$2.00.

McGREY'S YELLOW-RS63-An exquisite bud opens into a big well formed flower, bright Buttercup-yellow. A healthy strong grower, flowering freely, loved by all. Among McGredy's best. Each \$1.25, Doz. \$13.75.

MME. CHIANG KAI-SHEK-RP46-Pat. All American winner '43. A superb new yellow rose named in honor of the First Lady of China. The long spiral buds are exquisite and unfold into a perfect flower of light canary-yellow. This is one of the really fine new Roses offered in recent years. The rich and delightful fragrance of this newcomer reminds one of the old China Tea Roses of our grandmother's gardens. Vigorous in growth, perfection in form, bewitching in fragrance and supreme in breeding, all these qualifications make Mme. Chiang Kai-Shek tops among the light yellow Roses. Each \$2.00, Doz. \$22.00.

MME. CHIANG KAI-SHEK



Fall Shipping Only

Orders are accepted this season **ONLY** for fall delivery and not for spring delivery. Before spring, we shall plan to send you full information on what will be available for shipment at that time.

Stocks of first grade roses are still limited so **PLEASE ORDER EARLY.**

World Famous---"Oregon Grown"

ROSES

HEARTS DESIRE—RP34—Pat. 501. All American '41. A red Rose that's hard to beat. Its long stemmed buds are fine for cutting, the fully opened blooms are not only beautiful in form but delightfully fragrant and long lasting. A well named Rose that will truly fulfill your Heart's Desire. Each \$1.50, Dozen \$16.50. Postpaid in U. S. A.

CHRISTOPHER STONE—RS50—One of our Rose experts terms this the near perfect Rose. Its very large bloom is a rich unfading scarlet overlaid with velvety crimson. Good in any climate, an unbelievably heavy bloomer with a very delicious old Rose scent. The foliage, habit of growth and the long lastingness of the blooms make it tops as a border rose or for cutting. Each \$1.25, Doz. \$13.75. Postpaid within U. S. A.

CONDESA DE SASTAGO—RS53—A beautiful fully double Rose vividly colored somewhat like the old Austrian Copper. The golden yellow buds are strikingly marked with brilliant capucine-red and the flowers when open have the same delightful coloring. It has a spicy scent you will enjoy. A strong grower you will long cherish. Each \$1.25, Doz. \$13.75.

KAISERIN AUGUSTA VICTORIA—RS61—This old variety is still hard to equal in its color class. Its lovely pearly white blooms tinted with just enough lemon to soften the white

are delightful. The pleasing fragrance of the beautifully shaped blooms on their long graceful stems and its strong healthy growth and free blooming make it a good rose, not to be overlooked due to age. Each \$1.25 and well worth it. Dozen \$13.75. Postpaid.

EDITOR McFARLAND—RS55—The beautifully formed pink buds open into a moderate sized deep pink bloom, exquisitely fragrant. The plant is a strong vigorous grower with stiff wiry stems. Ideal as a cut flower. Each \$1.25, postpaid.

JOANNA HILL—RS59—Exquisite long orange-yellow buds open to large semi-double, long lasting blooms, clear yellow with an orange-yellow heart. Good fragrance. They are borne singly on long strong stems in great profusion. Each \$1.25, Doz. \$13.75, postpaid.

PINK DAWN—RS65—A very beautiful Hybrid Tea, glorious deep rose buds developing lovely pink blooms tinted orange at base of petals. A truly fine Rose, sweetly fragrant and a vigorous grower. Each \$1.25, Doz. \$13.75.

POINSETTIA—RS67—Considered the most vivid red Rose ever produced. The name is truly descriptive of the color, a Poinsettia-scarlet. The buds are ideal, long and pointed, the bloom full-petaled and fine for cutting. Certificate of Merit by American Rose Society. Each \$1.25, Doz. \$13.75. Postpaid U. S. A.

Floribunda Roses

These cluster Roses are especially good for massing. They are long lived, bloom the entire season and are of easy culture. The entire color range is found among them. Plant them fairly close together, about 15 inches, and you will have color that will rival the effectiveness of our tender annuals. Most of them are bushy in growth and the blooms last well in all weathers. They are ideal in front of Lilies or to face down shrub plantings.

BETTY PRIOR—RF71—Pat. A distinctive cluster Rose, blooming continuously, the single blooms resembling that of the lovely Red Dogwood, a most appealing color. A healthy, vigorous grower. Each \$1.25, Doz. \$13.75.

PINOCCHIO—RF79—Pat. A baby everblooming Rose you will love. Large clusters in the cheeriest, daintiest salmon, flushed with gold. Every little bud a perfect garden rose in miniature. Exquisite for corsages and boutonnières. A delicious fruity fragrance. Each \$1.25, Doz. \$13.75, postpaid.

RED RIPPLES—RF81—Pat. Probably the best of the red Floribundas. Beautifully formed, long-lasting blooms of an intense, vivid red. A Rose that will be a highlight in your garden all season. Each \$1.25, Doz. \$13.75. Postpaid U. S. A.

SMILES—RF83—Pat. An exceptionally beautiful salmon-pink with semi-double flowers. Like others of the Floribunda strain, it blooms continuously until frost. The blossoms are about 3 inches in diameter and delightfully fragrant. Plant is medium height with fine vigorous foliage. Each \$1.25, Doz. \$13.75.

LILIES FROM SEED

LILY SEED

Available Now

We are listing two groups of Lily varieties of which we expect to be able to supply seed throughout the summer and early fall. We have limited quantities of other varieties. If interested, please write for list.

Easy or quick varieties. Top growth usually appears in three to eight weeks.

Davidi—252.

Davmottiae—262.

Formosanum late variety—316.

Longiflorum White Queen—452.

Maximowiczii late Variety—530.

Maximowiczii Wadai—536.

Maxwill—540.

Preston's Hybrids—624.

Willmottiae—872.

Slow varieties. Usually germinate in 6 to 15 months.

Auratum—130.

Bellingham Hybrids—177.

Canadense Flavum—191.

Cordatum—224. (\$1.25 packets only.)

Giganteum Himalaicum—350. (\$1.25 packets only.)

Humboldtii Magnificum—398.

Superbum—796.

Washingtonianum Purpureum—880

All of the above except where noted are offered in regular packets at 60c each, and large packets \$1.25. All seeds are postpaid.

Growing Lilies from seed may well be the gardeners most thrilling adventure. Seedling Lilies are disease free and unless infected from other Lilies, remain so. Many varieties are available and for a small outlay you can produce many fine bulbs. There is no fortune in Lily growing but there is a wealth of interesting adventure and pleasure far exceeding your fondest expectations.

We have divided the list into two groups, the easy and quick, and the slow and sometimes difficult. Both contain many fine varieties and the slower ones are well worth waiting for. From this seed you might produce the world's most beautifully Lily—who knows?

Regal Lily Seed

This is an easy or quick variety ideal for the beginner. It is offered in two grades. Field run from top quality stock, Large Trade Packets \$1.25. Ounce \$2.00. 1/2 lb. \$12.50. Special prices on large quantities.

Extra Select Regal Seed from bulbs selected for seed production, **all hand pollinated.** This is tops of any I've seen. Supply limited but while it lasts, liberal packet \$2.00.

Esperanza Auratum Seed

Seed of this gorgeous hybrid strain of Auratums is available in limited quantity at \$3.00 per packet (about 100 seeds). Cultural directions on each packet.

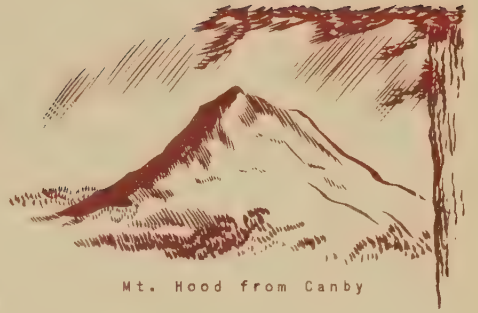
GENERAL DIRECTIONS

Most Lilies may be successfully grown from seed sown outdoors in well prepared beds. However, it is quicker and easier, especially for small lots, to sow in flats. Cold frames and electric hot beds also work well. The easy varieties are best sown in early spring, the slow kinds in summer or early fall to germinate the next spring. Provide lath shade during the summer. One-half inch is sufficiently deep to cover when protection is provided from heavy rains. Seedlings may be potted when the first true leaves appear or allowed to grow on in the frame until a year old. They may then be lined out in nursery rows in open ground. Use care in transplanting not to break the tiny rootlets. A quick method of germinating seed that is recommended for Auratum and some others, is to mix the seed with a small quantity of clean moist sand and place the mixture in a glass jar, making sure you can see some of the seed next to the glass. Screw the lid on tight and put the jar in a warm place such as the top shelf in the kitchen where a nearly steady temperature of 70 degrees is held. In six weeks to three months, small bulblets will form. These may be sown outside any time the ground is not frozen but protect from heaving by frost with a heavy mulch. Keep moist and shade in the summer.

Check the catalog descriptions of the varieties in selecting those you want to grow from seed. Choose those for which you can provide the right cultural environment.

ROMAINE B. WARE ~ *Lilies*

CANBY, OREGON



Mt. Hood from Canby

Dear Friends:-

As another garden year begins we again extend our sincere thanks for your orders and all the friendly letters and good wishes. We were not able to supply all the bulbs you wanted last year but hope to do better this season. Your cordial letters about the lily bulbs purchased the previous year were also much appreciated. We send out the very best bulbs to be had and when you write and tell us how lovely they are it helps a lot. Also for the enthusiastic letters about our packing and the condition the bulbs arrive, we thank you.

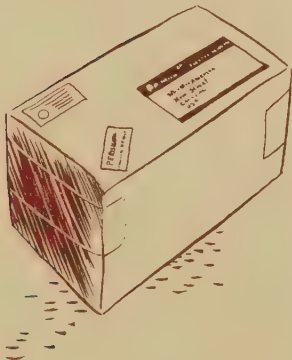
WE ARE HAPPY ...

... to announce that a heavy percentage of all the lilies we offer have either been reduced in price or kept the same as last year. A few have been increased, several quite a bit we are sorry to say. Increases are due to conditions beyond the control of either Mr. Kline or myself. Of course some lilies will probably always be high priced as they are very slow to propagate and greatly in demand. Many others will gradually come down as the supply increases. In many cases growers are now producing three to four times as many bulbs as they did a few years ago, but, the demand has increased also. With some varieties it seems almost impossible to grow them fast enough.

We are very sorry the price of Auratum has had to advance because so many of you want it. We hoped it would not but had no control in the matter. Doubtless the new Auratums are well worth even today's price. They are exceptionally gorgeous. But a ten spot does not buy as much of their beauty as it used to do and we can not help it.

However there are many, many very fine lilies that do not cost a great deal and you will welcome them to your borders. We hope that many more of them will come down in a few years and your lily dollars will buy more beauty.

FORTUNATELY FOR US ...



... and for you, the problem of properly packing lily bulbs so they will reach you in first class condition seems to be pretty well solved. Last November we shipped a package of lily bulbs to new Zealand by regular parcel post. They were on the way over eleven weeks and the customer reported, they reached him in perfect condition. Unquestionably the cellophane bags and the slightly damp peat maintained just the correct moisture conditions to prevent the bulbs from drying.



TRUMPET

Trumpet shaped, usually white and held horizontal. Examples, Regale and Candidum.

Your letters from Down East, from Georgia, Alabama and elsewhere, about the bulbs arriving in perfect condition after three thousand miles or more of travel, gives us positive assurance that there need be no hesitancy on your part in ordering from Oregon even if it does seem to be a long way off. The ideal climate out here produces bulbs that mature properly and can be depended upon to ship and arrive OK.

WE ARE SORRY ...

... so many customers were unable to get all the varieties of lilies they wanted when ordering late last year. Many lilies were in short supply last season. In fact, we sold entirely too close on numerous kinds and will be unable to offer any of them this season. As I've mentioned before, lilies require years to grow and due to limited help during the war years, some varieties were not propagated extensively. We are now stepping up the schedule but it will take time to catch up, and more people than ever are buying lilies. Probably the reason for the great increase in demand for lilies is that you are discovering they are not as difficult as you thought. The scores of new hybrid lilies which have been introduced in recent years are far superior to the older kinds. They are more resistant to disease and not so particular in their cultural requirements. The home grown lily bulbs from the Pacific Northwest have proven themselves much more adaptable to American gardens than the previously imported stocks.

Another reason for the limited supply of some varieties is the few growers who are today producing lilies for home garden use. Literally millions of lilies are grown here in the Oregon country but the vast majority of them are florists varieties for greenhouse forcing. Other than a few small growers, there are less than a half dozen who specialize in these gorgeous gems for home gardens. Mr. Kline, however, is greatly increasing his plantings and not only producing more of nearly all varieties we offer but he is also propagating almost as many additional kinds which are not as yet in sufficient supply to offer.

SULPHUREUM, OCHRACEUM, etc.,

We were sadly disappointed in not being able to supply these fine lilies this season. A substantial quantity of the above two as well as Bakerianum and Wallichianum were prepared for shipment from Burma but due to a strike, the entire lot spoiled on the dock at Calcutta. So now there will be none until the spring of 1948 when we hope it will be possible to supply them. Those of you who wrote about them will be advised as soon as any information is available. None of the above have been arriving in this country since the war started. They are both unusual and most desirable.



BOWL

Open funnel or, bowl shaped, semi-erect or horizontal. Broad petals. Example, Auratum.



FUNNEL

Large heart-shaped leaves. Bulbs flower and die, producing offsets. Examples, Giganteum, Cordatum.



THE NEWER LILIES

Speciosum Oregon Giant, offered for the first time last year is unquestionably the most outstanding of this gorgeous strain. As a garden subject few other varieties equal its splendor. We are happy to be able to offer it again. This year the supply is a bit more plentiful but we would urge again, that early orders are most desirable. This lily is not grown from seed so propagation is comparatively slow. All the stock is grown in complete isolation to insure freedom from disease. In all probability we will not be able to supply as many bulbs as you will desire but year by year the supply will become larger.

RECURVED

Pendulous, nodding

Strongly reflexed.

Wide color range.

*Examples, Martagon,
Hansoni, Testaceum.*

The three groups of Aurelian Hybrids offered for the first time this year are distinctly worth while. They offer a new break in combination of color and form. Only a limited quantity is available this year, so early orders are important.

PINK REGALS

This is a new offering this season. A light pink lily with the same rugged stamina as the regular Regal. This should find a hearty welcome and be most popular. The famous Regal Lily is one of the most important of all garden flowers and with this new color break its popularity should spread. Stock is scarce as yet so if you are interested, better order early.

THE NEWER HYBRIDS

We wish it were possible to illustrate some of the newer hybrid lilies in natural color in the catalog but this will have to wait a year or two. As these new hybrids become more plentiful their sterling worth is being recognized. Hybrids have great advantage over species due to their inherent resistance to disease. Growers both amateur and professional have grown many hundreds of new lilies but only those of rugged constitution have persisted. The rest have disappeared and this is as it should be. There is no use bothering with a sickly lily.

One of the best examples is the famous Backhouse Hybrids which have been with us nearly half a century and still stand well to the top on their exceptional quality. The only drawback is, they are extremely slow to propagate and for this reason, still remain high in price and are likely to be high for a long time.

Hybrids of Regal, Sargentiae and Centifolium however, propagate very rapidly and have become quite reasonable. As the years go by we will doubtless develop many more hybrids of excellent garden value. Two of the finest now available are Fire King and the extra fine Preston Hybrids.



ERECT

Flowers erect and wide open. Mostly reds and oranges. Examples,

*Rubescens, Elegans,
Dauricum.*

ALL OF YOUR ...

... letters have been thoroughly enjoyed and those of you who have visited us have been most welcome. We are sorry we could not show you the lilies in bloom but none are being grown on the home place at present. Miss Clark grew no lilies here during the last five years she conducted this business and we have found it better to produce the lilies in isolated plantings. There is far less danger of disease and our aim is to supply only the best possible bulbs. At present our lilies are grown in more than twenty locations throughout the Pacific Northwest. The exceptional climate of this area produces a quality of bulbs not found elsewhere.

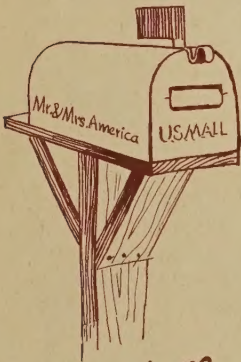
If you come to Oregon we will be glad to see you but it is best to drop us a line in advance as we are away frequently. This country is a gardener's paradise and you will love it.

THIS LETTER ...

... would not be complete without mention of the good reports we have had with the use of the new Micronized Copper Spray for control of Botrytis. During the past year the spray has been improved and you will find it sticks better during wet weather and all in all, is the best remedy for this bothersome lily disease. You should, however, have it on hand, ready to use BEFORE it is needed. There is not time after the Botrytis attacks to send for it. Sometimes a delay of even a few hours during warm, humid weather makes the difference between serious infection and a slight damage.

Botrytis on lilies is not necessarily fatal. If checked in time there is little harm. Neglected, the foliage is lost and that weakens the bulb, threatening its survival. The disease is not carried over in the bulb or transmitted by the bulb. Damage by late frost increases the danger of attack by Botrytis and for this reason one should have a supply of the Copper on hand before growth starts in the spring. It keeps indefinitely and is easily washed out of the sprayer, a factor of value compared to the messy and less efficient Bordeaux we used to have to depend upon.

NOW IN CLOSING



*Oregon is no
farther than
YOUR mail box*

Let me mention again, in all probability there will not be enough bulbs this season to supply all your demands. It will be several years yet before the supply can catch up. So, if you want lily bulbs this year get your order in as early as possible. Many of the scarce varieties are sold out by mid-summer, long before they are dug. We enter each order in strict rotation as they are received and when those sold equal the estimated crop, we have to refuse further orders. Lilies require years to produce. SO PLEASE GET YOUR ORDERS IN EARLY.

Sincerely yours,

Romaine B. Ware

Mycronized Copper for Botrytis Control

The enthusiastic reports we have had on control of botrytis on Lilies with the new Micronized Copper spray are most gratifying. This is good news to Lily lovers who've been fighting a losing battle with this bothersome disease which destroys the lower leaves of Lilies and sometimes entire stems during wet humid weather. This new spray, developed here in the Northwest, where millions of Lilies are grown, has proven almost 100% control. During the past year extensive experiments and tests have improved the spray still further, making it stick better and stay in solution more completely.

In spite of some reports to the contrary, botrytis is not necessarily fatal to Lilies even if it almost completely destroys the foliage. The blight does not attack the bulb itself and is not carried by the bulb. Repeated tests have proven that plants infected one season may be perfectly free the next but loss of foliage during the growing

season may weaken the bulb and threaten its survival. If your Lilies suffer an attack of botrytis, don't destroy them. They may be fine next summer. BUT be prepared to promptly combat the disease the moment it should appear another year.

Micronized Copper, unlike the usually used Bordeaux, will not burn even the tenderest seedlings. It adheres even through heavy rains, keep well in mixture and is far more easily cleaned out of the sprayer. In fact, it seems to be the answer to the Lily lover's prayer. Mr. Kline uses it exclusively on his large plantings of nearly 200 varieties of Lilies and recommends it 100%.

The new improved Micronized Copper, mixed with water and a spreader known as 101 Spreader, is all you need but be sure to have them on hand to use at once should botrytis show up. A delay of even a few hours makes a great difference in successfully combating the disease.

We offer this spray combination in two sizes, as follows:

Four pounds of Micronized Copper and one pint of 101 Spreader (enough to make 100 gallons of spray), express collect..... **\$4.25**

One pound of Micronized Copper and four ounces of 101 Spreader (enough to make 25 gallons), shipped postpaid for..... **\$2.75**

If desirable you may add Nicotine Sulphate (Blackleaf 40) to control aphids at the same time, one ounce to 25 gallons. Both the Copper and Spreader keep perfectly so if you do not use it all this season you will be ready for next year.



Introducing Romaine B. Ware

So many customers have addressed me as Miss Ware that I'm constrained to introduce myself. Many of you have commented on having read some of the more than five hundred garden articles from my pen published in a score of magazines during the past twenty years. Gardening has been my hobby for more than forty years. It has found me working with plants in backyard gardens from coast to coast in nine different states. Only during the past two years since taking over Miss Clark's Lily business have my interests been in the commercial end of horticulture.

During all these years I've experimented with countless varieties and species of plants. I've endured the same heart breaking disappointments you have when cherished plants and bulbs failed. I've enjoyed the same thrills as you when lady luck smiled on my efforts. During the past two decades it has been my privilege to travel coast to coast nine times, visiting gardens and nurseries in forty states, gathering first-hand information which makes it possible for me to understand your problems, no matter where your garden.

All of which permits me to prepare this catalog with thoughts of your problems in mind. It is your catalog, dedicated to helping you succeed with the garden jewels herein offered.

I wish I could visit your gardens, every one of them. But life is too short and you are keeping me too busy with the Lilies. However, I wish you the best of success with your gardens and your Lilies. They will succeed for you if you will seek to understand them.



LILIUM CENTIFOLIUM HYBRID

Centifolium Hybrids

—212

Here's a truly gorgeous Lily, one you will want no matter how many others you may have. Centifolium Hybrids are close cousins to the Regale, the world's most popular Lily and in some respects even more beautiful. They come into bloom just as the Regals are through and extend the flowering season through another three weeks of glorious bloom.

Centifolium Hybrids are the result of *Lilium Leucanthemum-Sargentiae-Regal* crosses, producing huge masses of white trumpets on sturdy stems five to six feet tall, thriving in full sun or partial shade. The exteriors of the buds are tinted from very pale green to pink and brownish-purple, a lovely contrast to the open blossoms. Plant groups of them against a dark evergreen background or in front of a late blooming pink climbing rose. They are lovely against a purple leaved plum or rising from a mass of *Heliotrope* with a background of *Lonicera Heckrottii* with its purple-yellow blooms.

These unusually vigorous and healthy Lilies with their free blooming habits are worthy of mass planting if you have the room. A dozen or twenty-five or more will produce never to be forgotten pictures. Our stocks are not unlimited but we have a substantial supply of top quality bulbs. Selected large size bulbs each \$1.00. **Choice medium size bulbs, each 55c, Three for \$1.50, One Dozen \$6.00, Twenty-five for \$12.00.** Small flowering size bulbs, each 40c, Three for \$1.10, Dozen \$4.40. All postpaid.

Quality!

The Very Best Is . .
Just Good Enough

*Jewels
for your
Garden
Picture*

SPECIES TULIP CLUSIANA

T. CLUSIANA—1304—The Lady Tulip or Candy-stick Tulip. One of the daintiest gems of the Tulip world. The flower is not large but most charming on its 15-inch stems, white with crimson exterior and a dark blue base. Plant a couple of dozen at the base of a white birch tree with a ground cover of forget-me-nots and you'll have a never-to-be-forgotten picture. Use them in clumps in the rock garden or against a stone wall. There are many spots where they will prove delightful. **6 for \$1.75. Doz. \$3.30. 50 for \$13.00. 100 postpaid for \$25.00. (No orders for less than six.)**

TULIP CLUSIANA

